

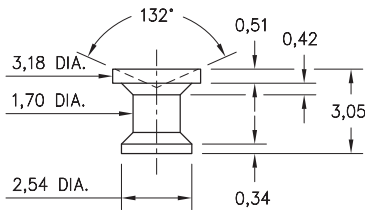
MALE PCB PINS

PRINTED CIRCUIT PINS

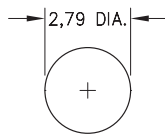
1943

1943-0-00-15-00-00-03-0

Concave face Target contact, surface mount
Also available on 16mm wide carrier tape:
2,200 parts per 330mm reel.
See page 224.3 for Tape & Reel details



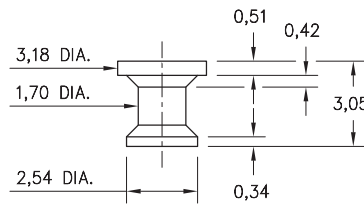
P.C.B. Layout



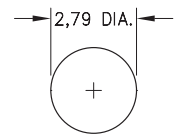
1944

1944-0-00-15-00-00-03-0

Flat face Target contact, surface mount
Also available on 16mm wide carrier tape:
2,200 parts per 330mm reel.
See page 224.3 for Tape & Reel details



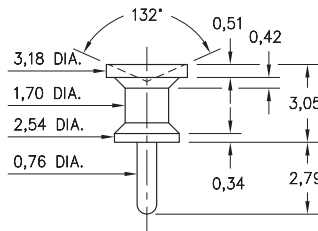
P.C.B. Layout



1945

1945-0-00-15-00-00-03-0

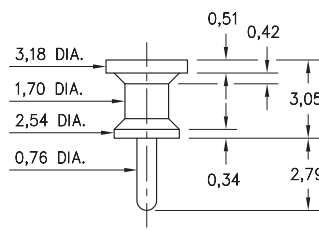
Concave face Target contact, Solder Tail



1946

1946-0-00-15-00-00-03-0

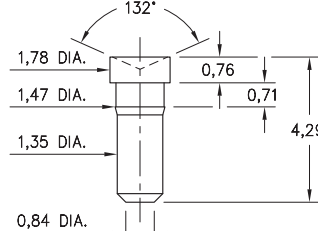
Flat face Target contact, Solder Tail



1947

1947-0-00-15-00-00-03-0

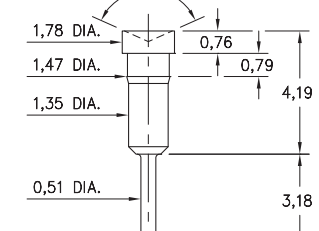
Concave face Target contact, surface mount
Press-fit in 1,42 mounting hole



1948

1948-0-00-15-00-00-03-0

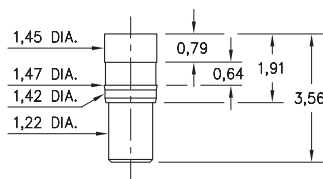
Concave face Target contact, Solder Tail
Press-fit in 1,42 mounting hole



1949

1949-0-00-15-00-00-03-0

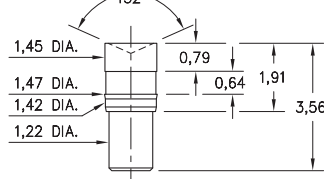
Flat face Target contact, surface mount
Press-fit in 1,42 mounting hole



1950

1950-0-00-15-00-00-03-0

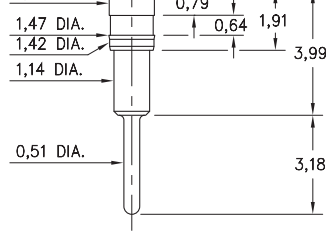
Concave face Target contact, surface mount
Press-fit in 1,42 mounting hole



1951

1951-0-00-15-00-00-03-0

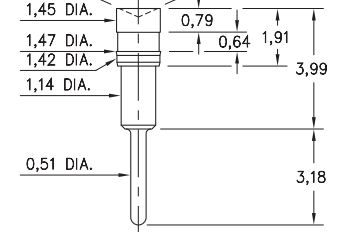
Flat face Target contact, Solder Tail
Press-fit in 1,42 mounting hole



1952

1952-0-00-15-00-00-03-0

Concave face Target contact, Solder Tail
Press-fit in 1,42 mounting hole



SPECIFICATIONS:

Pin Material: Brass Alloy 360, 1/2 Hard
(Except where noted)

Dimensions: Millimeters

Tolerances On: Lengths: $\pm 0,13$
Diameters: $\pm 0,051$
Angles: $\pm 2^\circ$



ORDER CODE: 194X - 0 - 00 - 15 - 00 - 00 - 03 - 0

BASIC PART #

SPECIFY PIN FINISH:

◆ 15 0,25µm GOLD OVER NICKEL (RoHS)

