

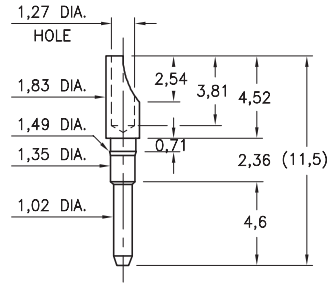
MALE PCB PINS

PRINTED CIRCUIT PINS

1140

1140-0-01-XX-00-00-03-0

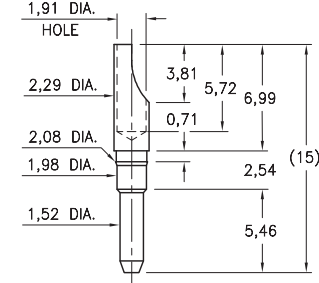
Press-fit in 1,45 mounting hole
For wire sizes up to 20 AWG



1160

1160-0-01-XX-00-00-03-0

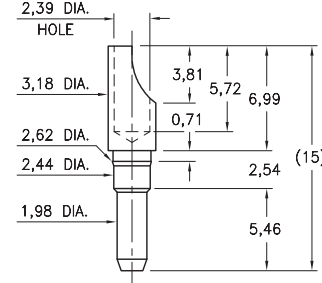
Press-fit in 2,03 mounting hole
For wire sizes up to 16 AWG



1178

1178-0-01-XX-00-00-03-0

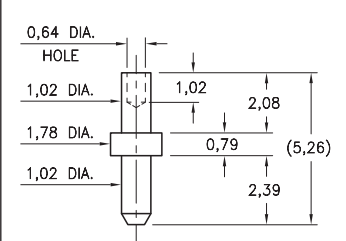
Press-fit in 2,54 mounting hole
For wire sizes up to 14 AWG



4658

4658-0-00-XX-00-00-08-0

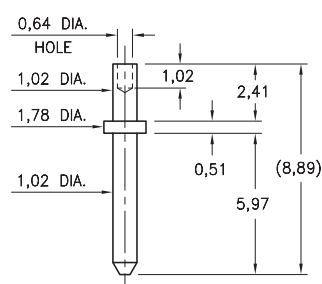
Swage mount 1,09 mounting hole



4275

4275-0-00-XX-00-00-08-0

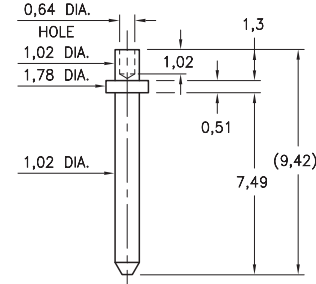
Swage mount 1,09 mounting hole



9103

9103-0-00-XX-00-00-08-0

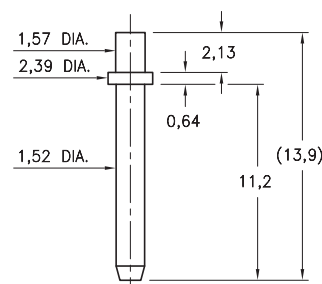
Swage mount 1,09 mounting hole



4357

4357-0-00-XX-00-00-03-0

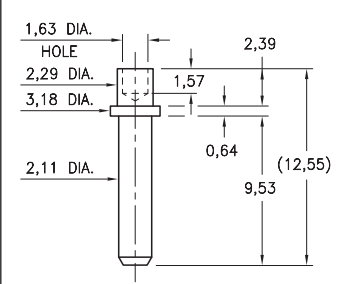
Solder mount 1,63 mounting hole



9242

9242-0-00-XX-00-00-08-0

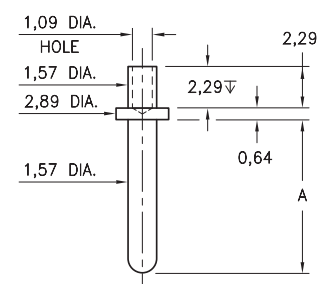
Swage mount 2,39 mounting hole



4639/4717

4XXX-0-00-XX-00-00-08-0

Swage mount 1,65 mounting hole

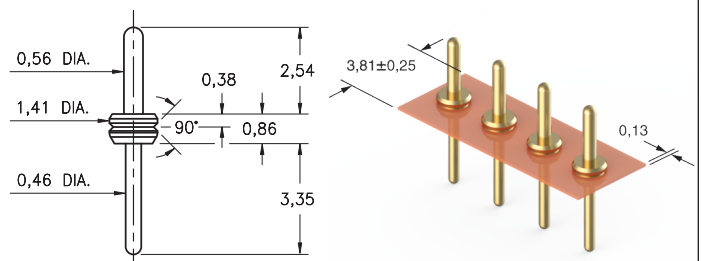


Basic Part Number	Pin Length A
4639-0	10,97
4717-0	8,43

3169

3169-0-61-15-00-00-03-0

Pins are mounted on a removable Kapton tape carrier at 2,54 pitch.
Packaged on continuous strip spools of 1,000 pins.
(Contact distributors for other order quantity options.)



SPECIFICATIONS:

Pin Material: Brass Alloy 360, 1/2 Hard
(Except where noted)

Dimensions: Millimeters

Tolerances On: Lengths: ± 0,13
Diameters: ± 0,051
Angles: ± 2°



ORDER CODE: XXXX - 0 - 00 - XX - 00 - 00 - 03 - 0

BASIC PART #

SPECIFY PIN FINISH:

- 01 5,08µm TIN/LEAD OVER NICKEL
- ◆ 80 5,08µm TIN OVER NICKEL (RoHS)
- ◆ 15 0,25µm GOLD OVER NICKEL (RoHS)
- ◆ 21 0,51µm GOLD OVER NICKEL (RoHS)
- ◆ 34 1,27µm GOLD OVER NICKEL (RoHS)

