

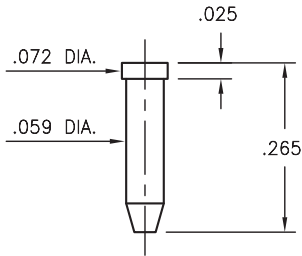
MALE PCB PINS

PINS ON TAPE & REEL PACKAGING

9265

9265-0-57-XX-00-00-38-0

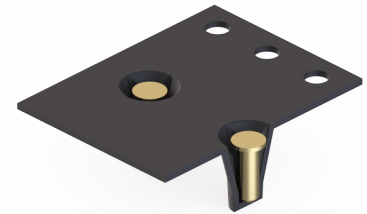
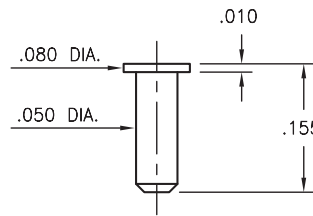
Solder mount in .063 mounting hole
16mm wide X 8mm pitch carrier tape:
1,170 parts per 13" reel.



2381

2381-0-57-XX-00-00-33-0

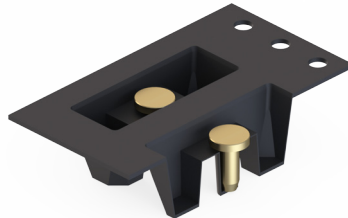
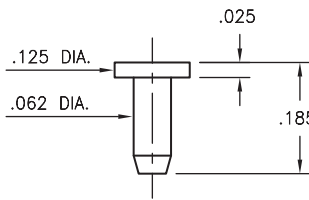
Solder mount in .054 mounting hole
16mm wide X 8mm pitch carrier tape:
1,800 parts per 13" reel.



9022

9022-0-57-XX-00-00-33-0

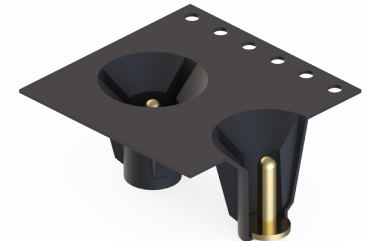
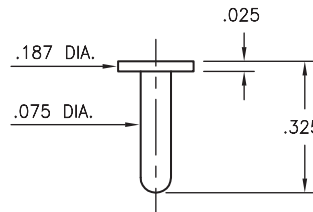
Solder mount in .066 mounting hole
24mm wide X 8mm pitch carrier tape:
1,500 parts per 13" reel.



8086

8086-0-59-XX-00-00-33-0

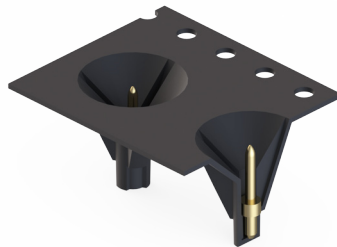
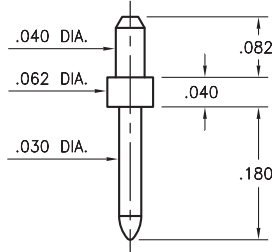
Solder mount in .079 mounting hole
24mm wide X 8mm pitch carrier tape:
330 parts per 13" reel.



3137

3137-1-57-XX-00-00-08-0

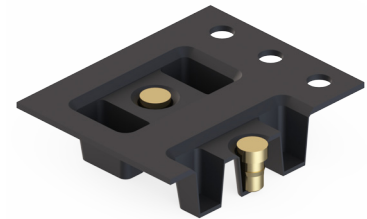
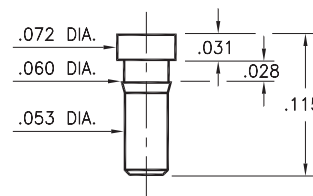
Solder mount in .043 mounting hole
16mm wide X 12mm pitch carrier tape:
580 parts per 13" reel.



0286

0286-0-57-XX-00-00-03-0

Press-fit in .057 mounting hole
16mm wide X 8mm pitch carrier tape:
2,500 parts per 13" reel.



SPECIFICATIONS:

Pin Material: Brass Alloy 360, 1/2 Hard
(Except where noted)

Dimensions: Inches

Tolerances On: Lengths: ± .005
Diameters: ± .002
Angles: ± 2°



ORDER CODE: XXXX - X - 00 - XX - 00 - 00 - XX - 0

BASIC PART #

SPECIFY PIN FINISH:

◆ 15 10 μ" GOLD OVER NICKEL (RoHS)

