

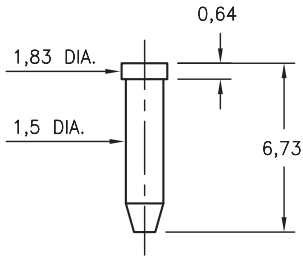
MALE PCB PINS

PINS ON TAPE & REEL PACKAGING

9265

9265-0-57-XX-00-00-38-0

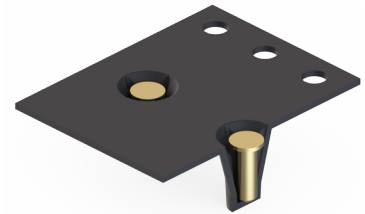
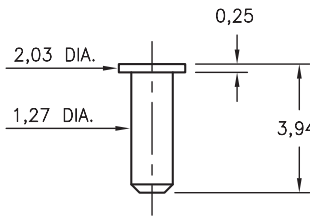
Solder mount in 1,6 mounting hole
16mm wide X 8mm pitch carrier tape:
1,170 parts per 330mm reel.



2381

2381-0-57-XX-00-00-33-0

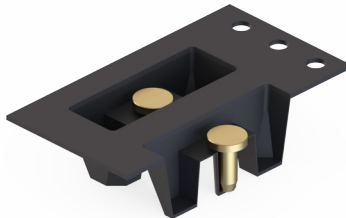
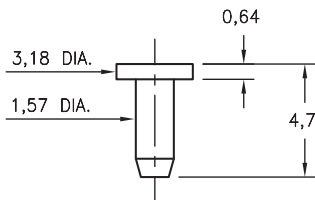
Solder mount in 1,37 mounting hole
16mm wide X 8mm pitch carrier tape:
1,800 parts per 330mm reel.



9022

9022-0-57-XX-00-00-33-0

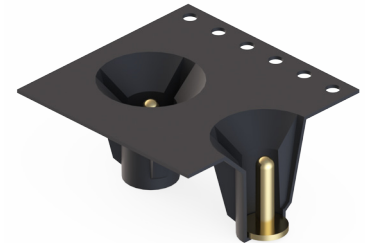
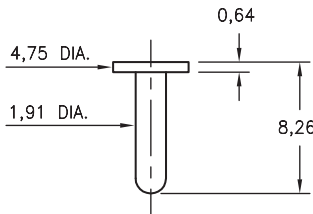
Solder mount in 1,68 mounting hole
24mm wide X 8mm pitch carrier tape:
1,500 parts per 330mm reel.



8086

8086-0-59-XX-00-00-33-0

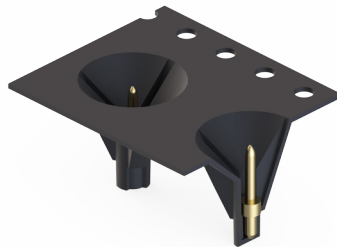
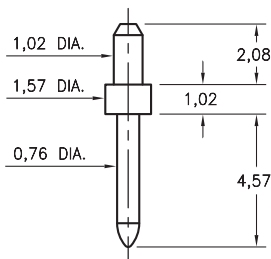
Solder mount in 2,01 mounting hole
24mm wide X 8mm pitch carrier tape:
330 parts per 330mm reel.



3137

3137-1-57-XX-00-00-08-0

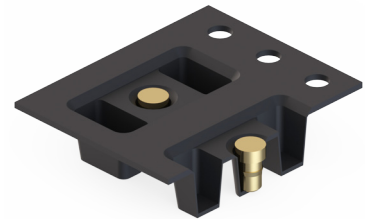
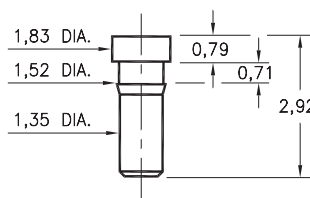
Solder mount in 1,09 mounting hole
16mm wide X 12mm pitch carrier tape:
580 parts per 330mm reel.



0286

0286-0-57-XX-00-00-03-0

Press-fit in 1,45 mounting hole
16mm wide X 8mm pitch carrier tape:
2,500 parts per 330mm reel.



SPECIFICATIONS:

Pin Material: Brass Alloy 360, 1/2 Hard
(Except where noted)

Dimensions: Millimeters

Tolerances On: Lengths: $\pm 0,13$
Diameters: $\pm 0,051$
Angles: $\pm 2^\circ$



ORDER CODE: XXXX - X - 00 - XX - 00 - 00 - XX - 0

BASIC PART #

SPECIFY PIN FINISH:

◆ 15 0,25µm GOLD OVER NICKEL (RoHS)

