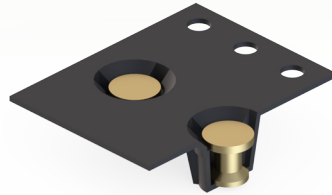
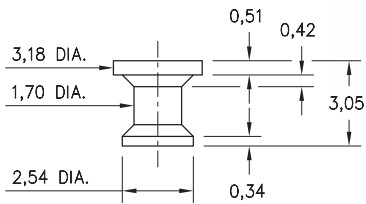


MALE PCB PINS

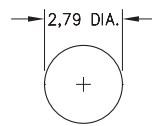
1944

1944-0-57-15-00-00-03-0

Flat face Target contact, surface mount
16mm wide X 8mm pitch carrier tape:
2,200 parts per 330mm reel.



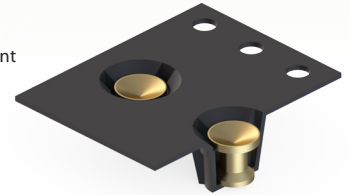
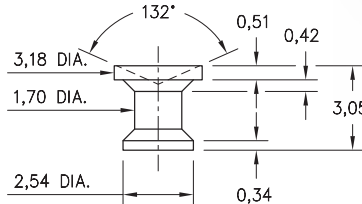
P.C.B. Layout



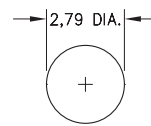
1943

1943-0-57-15-00-00-03-0

Concave face Target contact, surface mount
16mm wide X 8mm pitch carrier tape:
2,200 parts per 330mm reel.



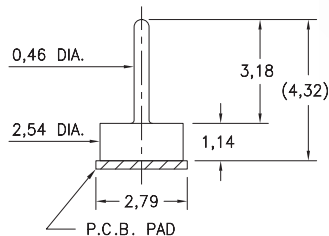
P.C.B. Layout



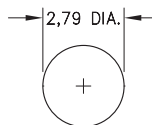
1508

1508-0-57-15-00-00-03-0

Test point, surface mount
16mm wide X 8mm pitch carrier tape:
1,600 parts per 330mm reel.



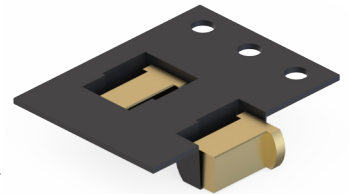
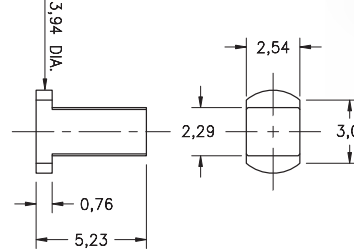
P.C.B. Layout



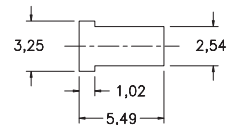
7937

7937-0-58-15-00-00-03-0

Target contact, horizontal surface mount
16mm wide X 8mm pitch carrier tape:
2,400 parts per 330mm reel.



P.C.B. Layout



SPECIFICATIONS:

Pin Material: Brass Alloy 360, 1/2 Hard
(Except where noted)

Dimensions: Millimeters

Tolerances On: Lengths: $\pm .005$
Diameters: $\pm .002$
Angles: $\pm 2^\circ$



ORDER CODE: XXXX - X - 00 - XX - 00 - 00 - XX - 0

BASIC PART # →

→ **SPECIFY PIN FINISH:**

- 01 200 μ " TIN/LEAD OVER NICKEL
- ◆ 80 200 μ " TIN OVER NICKEL (RoHS)
- ◆ 15 10 μ " GOLD OVER NICKEL (RoHS)
- ◆ 21 20 μ " GOLD OVER NICKEL (RoHS)
- ◆ 34 50 μ " GOLD OVER NICKEL (RoHS)

