

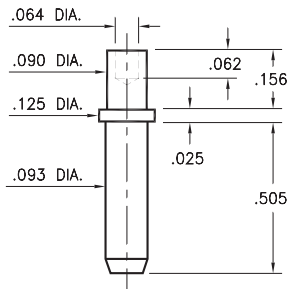
# MALE PCB PINS

## PRINTED CIRCUIT PINS

### 5231

5231-0-00-XX-00-00-38-0

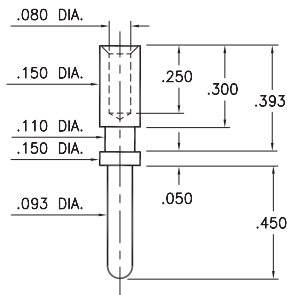
Swage mount in .094 hole  
For a .125 thick board



### 9092

9092-0-00-XX-00-00-38-0

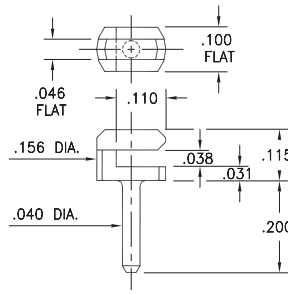
Wire crimp termination up to 14 AWG



### 7310

7310-0-01-XX-00-00-08-0

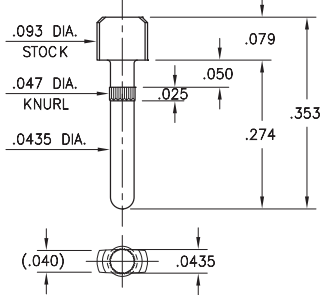
Board edge press-fit



### 5066

5066-0-00-26-00-00-03-0

Press-fit in .043 mounting hole



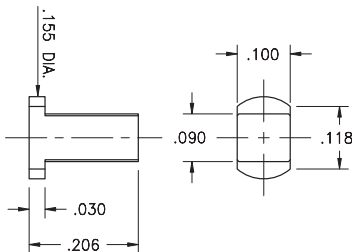
### 7937

7937-0-00-15-00-00-03-0

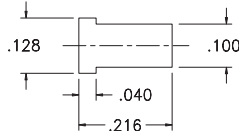
Target contact, horizontal surface mount  
Also available on 16mm wide carrier tape:

2,400 parts per 13" reel.

See page 224.3 for Tape & Reel details



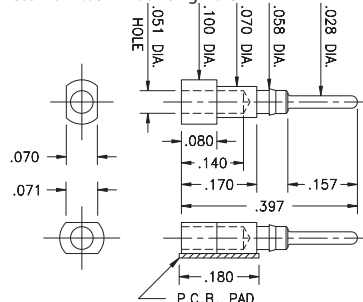
P.C.B. Layout



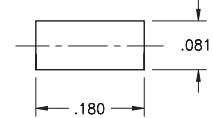
### 1502

1502-0-00-XX-00-00-03-0

Press-fit in .057 mounting hole



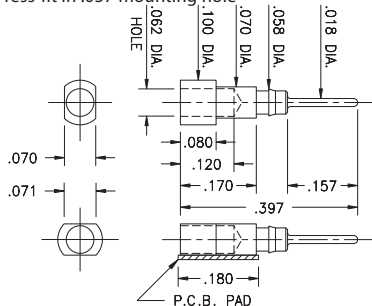
P.C.B. Layout



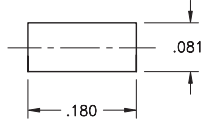
### 5102

5102-0-00-XX-00-00-33-0

Press-fit in .057 mounting hole



P.C.B. Layout



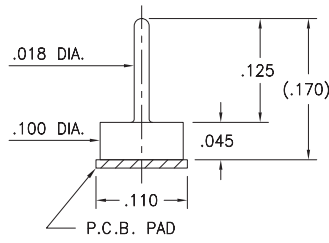
### 1508

1508-0-00-15-00-00-03-0

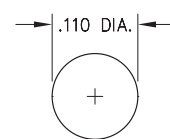
Test point, surface mount  
Also available on 16mm wide carrier tape:

1,600 parts per 13" reel.

See page 224.3 for Tape & Reel details



P.C.B. Layout



#### SPECIFICATIONS:

**Pin Material:** Brass Alloy 360, 1/2 Hard  
(Except swage pins which are annealed)

**Dimensions:** Inches

**Tolerances On:** Lengths: ±.005  
Diameters: ±.002  
Angles: ± 2°



ORDER CODE: XXXX - X - 0X - XX - 00 - 00 - XX - 0

BASIC PART #

SPECIFY PIN FINISH:

- 01 200 μ" TIN/LEAD OVER NICKEL
- ◆ 80 200 μ" TIN OVER NICKEL (RoHS)
- ◆ 15 10 μ" GOLD OVER NICKEL (RoHS)
- ◆ 21 20 μ" GOLD OVER NICKEL (RoHS)
- ◆ 34 50 μ" GOLD OVER NICKEL (RoHS)

