

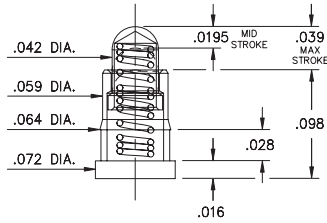
# SPRING-LOADED PINS

## SPRING-LOADED PINS ON TAPE & REEL PACKAGING

### 0900-0

0900-0-57-20-76-14-11-0

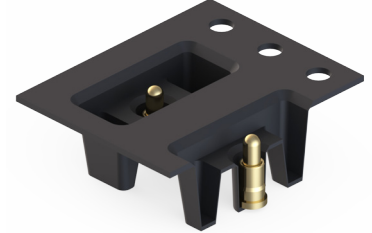
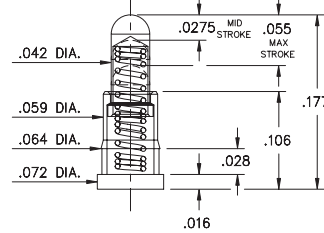
Short stroke, Surface mount  
16mm wide carrier tape: 2,000 parts per 13" reel.



### 0900-1

0900-1-57-20-7X-14-11-0

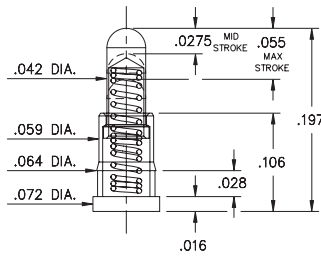
Standard stroke, Surface mount  
16mm wide carrier tape: 1,500 parts per 13" reel.



### 0900-2

0900-2-57-20-7X-14-11-0

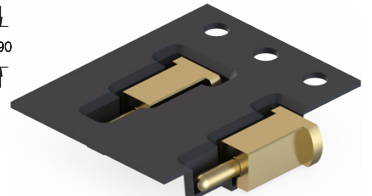
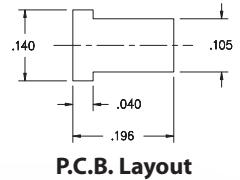
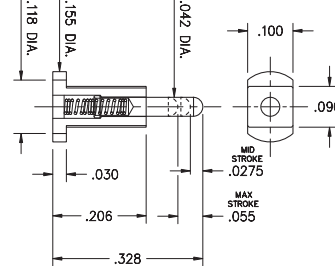
Standard stroke, Surface mount  
24mm wide carrier tape: 1,100 parts per 13" reel.



### 0967

0967-0-58-20-7X-14-11-0

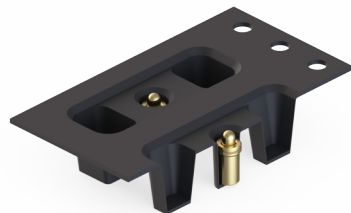
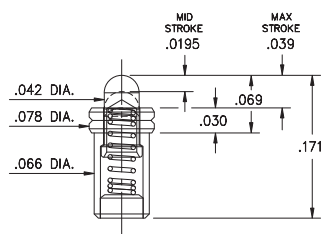
Standard stroke, Horizontal surface mount  
16mm wide carrier tape: 2,800 parts per 13" reel.



### 0921-0

0921-0-57-20-76-14-11-0

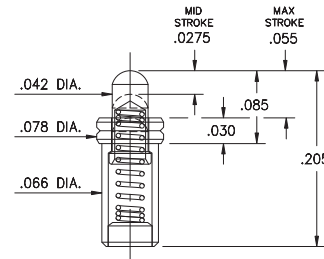
Ultra low profile, Short stroke. Solder mount in .070 min. mounting hole  
24mm wide carrier tape: 1,700 parts per 13" reel



### 0921-1

0921-1-57-20-7X-14-11-0

Low profile, Standard stroke. Solder mount in .070 min. mounting hole  
24mm wide carrier tape: 1,500 parts per 13" reel



#### Material Specifications:

**Sleeve & Plunger Material:** Copper Alloy  
**Spring Material:** Beryllium Copper  
**Sleeve & Plunger Finish:** 20 μ" Gold over Nickel  
**Spring Finish:** 10 μ" Gold over Nickel  
**Dimensions: Inches**  
**Tolerances On:** Lengths: ±.006  
Diameters: ±.002  
Angles: ±2°



#### Mechanical & Electrical Specifications:

**Durability:** 1,000,000 cycles  
**Current Rating:** 2A continuous, 3A peak  
**Contact Resistance:** 20 mΩ max.  
**Environmental Specifications:**  
**Operating temperature range:** -55/+125°C  
**75, 76 Springs are NOT interchangeable**  
**72, 75 Springs are interchangeable**

Order Code: 09XX - X - 57 - 20 - 7X - 14 - 11 - 0

Spring Number

Spring Number	Mid. Stroke	Max. Stroke	Force @ Mid. Stroke	Initial Force (Pre-Load)
72	.0275	.055	35 g	15 g
75	.0275	.055	60 g	25 g
76	.0195	.039	60 g	25 g

