

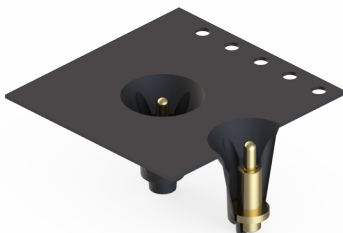
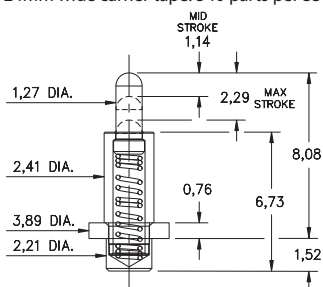
SPRING-LOADED PINS

SPRING-LOADED PINS ON TAPE & REEL PACKAGING

0851

0851-0-57-20-82-14-11-0

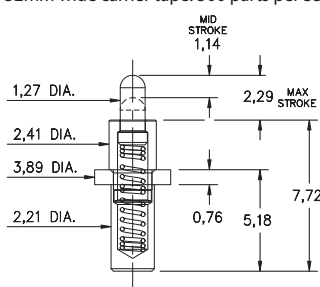
Solder Mount in 2,29 min. mounting hole or Surface Mount, 2,21 Ø minimum pad
24mm wide carrier tape: 540 parts per 330mm reel.



0850

0850-0-57-20-83-14-11-0

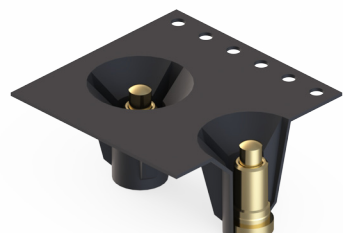
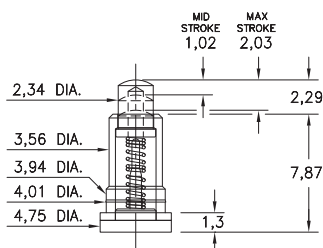
Power spring pin, Solder Mount in 2,29 min. mounting hole
32mm wide carrier tape: 500 parts per 330mm reel.



0871

0871-0-57-20-82-14-11-0

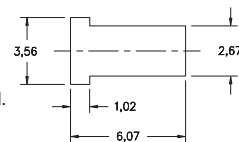
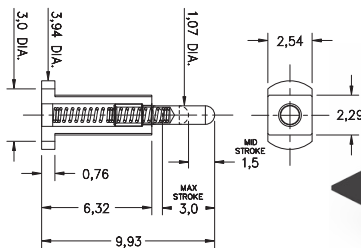
Long stroke, Surface mount *Force @ Mid. Stroke 100g
24mm wide carrier tape: 330 parts per 330mm reel.



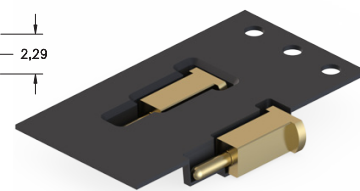
0987

0987-0-58-20-89-14-11-0

Long stroke, Horizontal surface mount
24mm wide carrier tape: 2,800 parts per 330mm reel.



P.C.B. Layout



Material Specifications:

Sleeve & Plunger Material: Copper Alloy
Spring Material: Stainless Steel 302
Sleeve & Plunger Finish: 0,5µm Gold over Nickel
Spring Finish: 0,25µm Gold over Nickel
Dimensions: Millimeters
Tolerances On: Lengths: ± 0,15
 Diameters: ± 0,051
 Angles: ± 2°



Mechanical & Electrical Specifications:

Durability: 1,000,000 cycles
Current Rating: 2A continuous, 3A peak
Contact Resistance: 20 mΩ max.
Environmental Specifications:
Operating temperature range: -55/+125° C

82, 83, 89 Springs are not interchangeable

Order Code: 08XX - 0 - 57 - 20 - **8X** - 14 - 11 - 0

Spring Number

Spring Number	Mid. Stroke	Max. Stroke	Force @ Mid. Stroke	Initial Force (Pre-Load)
82	1,14	2,29	120 g	25 g
83	1,14	2,29	120 g	25 g
89	1,5	3,0	85 g	25 g

