

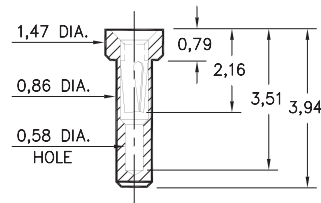
PIN RECEPTACLES

**FOR 0,38 - 0,51 DIAMETER PINS (#11 CONTACT)
AND 0,38 - 0,56 DIAMETER PINS (#21 CONTACT)
(SEE SPECIFIC CONTACT RANGE ON PAGE 251)**

0548

0548-0-15-XX-21-XX-10-0

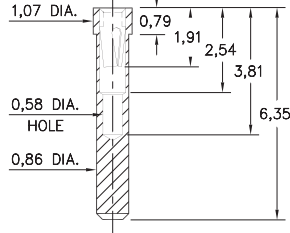
Solder mount in 0,91 min. mounting hole
Also available on 16mm wide carrier tape:
1,900 parts per 330mm reel
See page 194.3 for Tape & Reel details



8975

8975-0-15-XX-21-XX-10-0

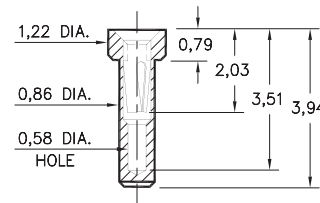
Solder mount in 0,91 min. mounting hole
Also available on 24mm wide carrier tape:
1,200 parts per 330mm reel
See page 194.3 for Tape & Reel details



3016

3016-0-15-XX-21-XX-10-0

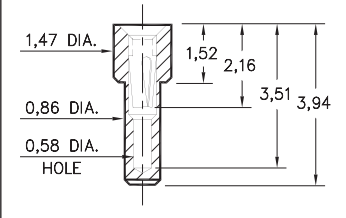
Solder mount in 0,91 min. mounting hole
Also available on 16mm wide carrier tape:
1,900 parts per 330mm reel
See page 194.3 for Tape & Reel details



9548

9548-0-15-XX-21-XX-10-0

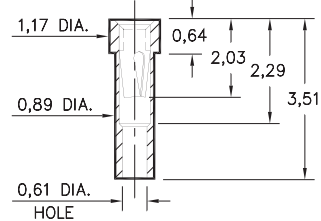
Solder mount in 0,91 min. mounting hole



8637

8637-0-15-XX-21-XX-10-0

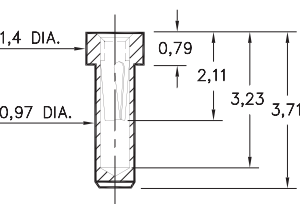
Solder mount in 0,94 min. mounting hole
Also available on 16mm wide carrier tape:
2,000 parts per 330mm reel
See page 194.3 for Tape & Reel details



1407

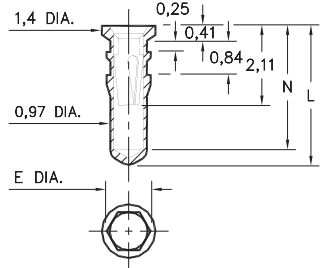
1407-0-15-XX-11-XX-10-0

Solder mount in 1,02 min. mounting hole
Also available on 16mm wide carrier tape:
1,500 parts per 330mm reel
See page 194.2 for Tape & Reel details



0553/4553/8553

X553-X-15-XX-X1-XX-10-0
Also available on 16mm wide carrier tape:
1,580 parts per 330mm reel
See page 194.2 for Tape & Reel details



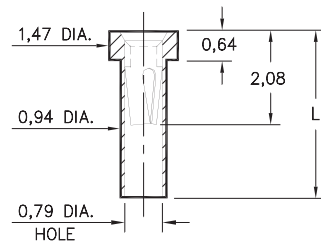
Hex press-fit in 1,04 plated through-hole
for Part Numbers **0553-X** and **8553-0** ONLY
Hex press-fit in 1,07 plated through-hole
for Part Number **4553-0** ONLY

Basic Part Number	Hex Dia. E	Length L	Depth N
0553-1	1,12	3,56	3,15
0553-2	1,12	4,32	3,91
0553-3	1,12	7,16	6,76
4553-0	1,14	4,32	3,91
8553-0	1,12	6,22	5,82

0566

0566-X-15-XX-21-XX-10-0

Solder mount in 1,0 min. mounting hole
Also available on 16mm wide carrier tape:
See chart for details
See page 194.3 for Tape & Reel details

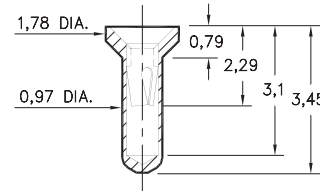


Basic Part Number	Length L	Parts per 330m Reel
0566-1	2,11	3,000
0566-2	3,51	2,100

0442

0442-0-15-XX-11-XX-10-0

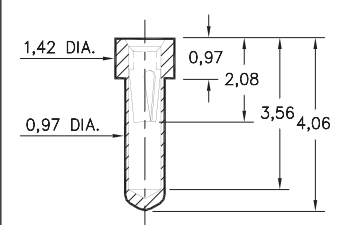
Solder mount in 1,02 min. mounting hole



0554

0554-0-15-XX-21-XX-10-0

Solder mount in 1,02 min. mounting hole
Also available on 16mm wide carrier tape:
1,850 parts per 330mm reel
See page 194.3 for Tape & Reel details



SPECIFICATIONS:

Shell Material: Brass Alloy 360, 1/2 Hard

Contact Material: Beryllium Copper Alloy 172, HT

Dimensions: Millimeters

Tolerances On: Lengths: ±0,13

Diameters: ±0,051

Angles: ±2°



ORDER CODE: XXXX - X - XX - XX - XX - 10 - 0

BASIC PART #

SPECIFY SHELL FINISH:

- 01 5,08µm TIN/LEAD OVER NICKEL
- ◆ 80 5,08µm TIN OVER NICKEL (RoHS)
- ◆ 15 0,25µm GOLD OVER NICKEL (RoHS)

SPECIFY CONTACT FINISH:

- 02 2,54µm TIN/LEAD OVER NICKEL
- ◆ 84 2,54µm TIN OVER NICKEL (RoHS)
- ◆ 27 0,76µm GOLD OVER NICKEL (RoHS)

SELECT CONTACT:

#11 or #21 CONTACT (DATA ON PAGE 251)

(For alternate contact choices, see group A on page 248)

