

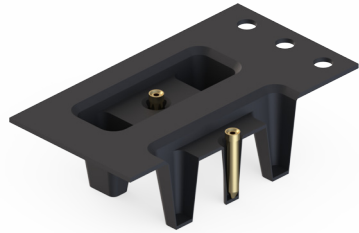
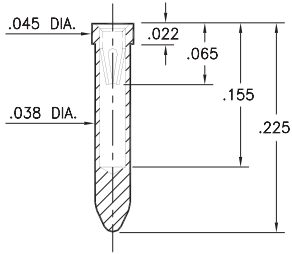
PIN RECEPTACLES

**FOR .012" - .017" DIAMETER PINS
RECEPTACLES ON TAPE & REEL PACKAGING**

8947

8947-0-57-XX-10-XX-10-0

Solder mount in .040 min. mounting hole
24mm wide X 8mm pitch carrier tape:
1,350 parts per 13" reel.



SPECIFICATIONS:

Shell Material: Brass Alloy 360, 1/2 Hard

Contact Material: Beryllium Copper Alloy 172, HT

Dimensions: Inches

Tolerances On: Lengths: $\pm .005$

Diameters: $\pm .002$

Angles: $\pm 2^\circ$



ORDER CODE: XXXX - X - XX - XX - XX - XX - XX - 0

BASIC PART # \swarrow

SPECIFY SHELL FINISH: \swarrow

01 200 μ " TIN/LEAD OVER NICKEL

◆ **80** 200 μ " TIN OVER NICKEL (RoHS)

◆ **15** 10 μ " GOLD OVER NICKEL (RoHS)

SPECIFY CONTACT FINISH: \swarrow

02 100 μ " TIN/LEAD OVER NICKEL

◆ **84** 100 μ " TIN OVER NICKEL (RoHS)

◆ **27** 30 μ " GOLD OVER NICKEL (RoHS)

SELECT CONTACT:

#10 CONTACT (DATA ON PAGE 250)
(NO alternate contact choices available)