

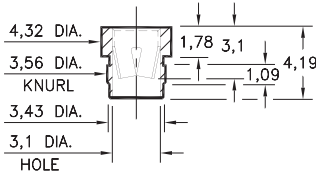
PIN RECEPTACLES

FOR 2,13 - 2,59 DIAMETER PINS

0388

0388-0-15-XX-08-XX-10-0

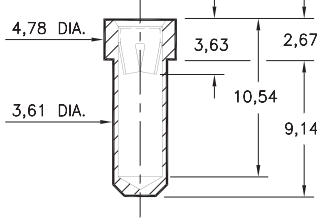
Press-fit in 3,51 mounting hole



0390

0390-0-15-XX-08-XX-10-0

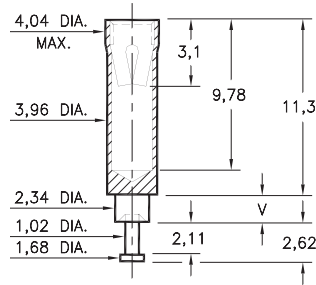
Solder mount in 3,66 min. mounting hole
Also available on 44mm wide carrier tape:
425 parts per 330mm reel
See page 194.19 for Tape & Reel details



0389

0389-X-15-XX-08-XX-10-0

Swage mount in 2,39 hole

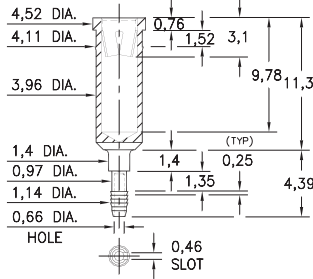


Basic Part Number	Board Thickness	Length V
0389-2	1,57	2,39
0389-3	2,39	3,18
0389-4	3,18	3,96

8963

8963-0-31-XX-08-XX-04-0

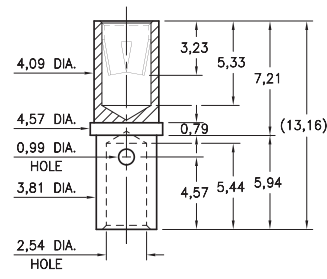
Compliant press-fit in 1,02 ± 0,08 plated hole. For 1,52 → 2,54 thick board



0712

0712-0-33-XX-08-XX-10-0

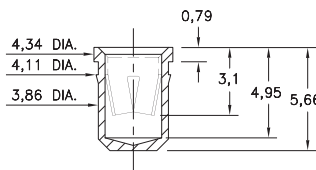
Wire crimp termination. Accepts wire sizes 12 AWG Max. / 14 AWG Min.



5493

5493-0-15-XX-08-XX-10-0

Press-fit in 4,01 mounting hole



SPECIFICATIONS:

Shell Material: Brass Alloy 360, 1/2 Hard

Contact Material: Beryllium Copper Alloy 172, HT

Dimensions: Millimeters

Tolerances On: Lengths: ± 0,13
Diameters: ± 0,051
Angles: ± 2°



ORDER CODE: XXXX - X - XX - XX - 08 - XX - XX - 0

BASIC PART #

SPECIFY SHELL FINISH:

- 01 5,08µm TIN/LEAD OVER NICKEL
- ◆ 80 5,08µm TIN OVER NICKEL (RoHS)
- ◆ 15 0,25µm GOLD OVER NICKEL (RoHS)

SPECIFY CONTACT FINISH:

- 01 5,08µm TIN/LEAD OVER NICKEL
- ◆ 80 5,08µm TIN OVER NICKEL (RoHS)
- ◆ 27 0,76µm GOLD OVER NICKEL (RoHS)

SELECT CONTACT:

#08 CONTACT (DATA ON PAGE 262)

