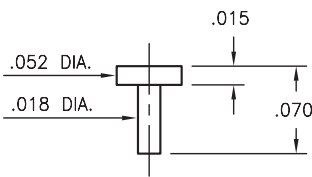


MALE PCB PINS

PRINTED CIRCUIT PINS • NAIL HEAD TYPE

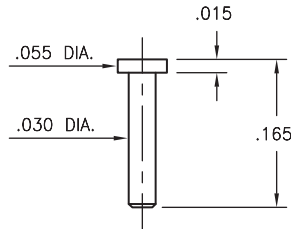
4361

4361-0-00-XX-00-00-33-0
Solder mount in .022 mounting hole
Also available on 16mm wide carrier tape:
3,600 parts per 13" reel.
See page 224.2 for Tape & Reel details



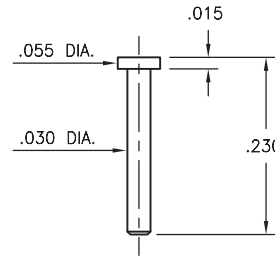
6477

6477-0-00-XX-00-00-38-0
Solder mount in .034 mounting hole



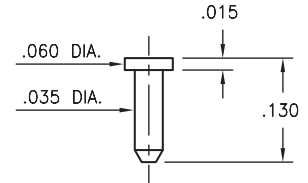
4477

4477-0-00-XX-00-00-33-0
Solder mount in .034 mounting hole
Also available on 24mm wide carrier tape:
1,300 parts per 13" reel.
See page 224.1 for Tape & Reel details



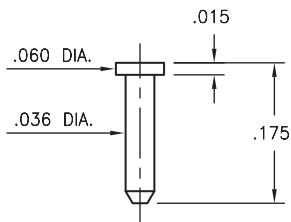
4268

4268-0-00-XX-00-00-33-0
Solder mount in .039 mounting hole



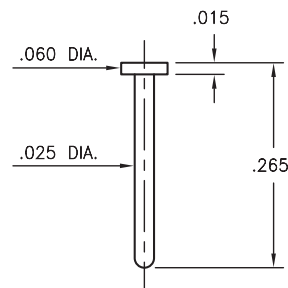
9086

9086-0-00-XX-00-00-33-0
Solder mount in .040 mounting hole



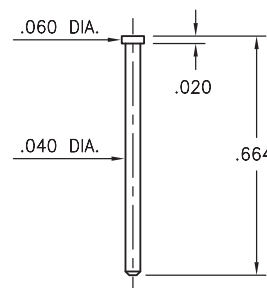
5850

5850-0-00-XX-00-00-03-0
Solder mount in .029 mounting hole



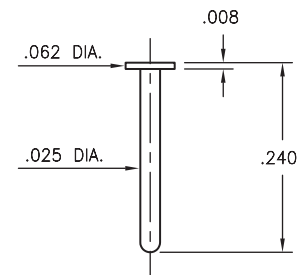
1179

1179-0-00-XX-00-00-33-0
Solder mount in .044 mounting hole



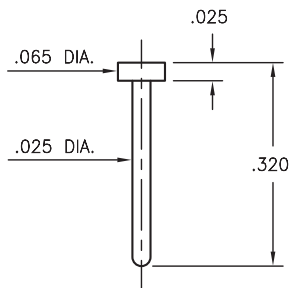
5240

5240-0-00-XX-00-00-33-0
Solder mount in .029 mounting hole



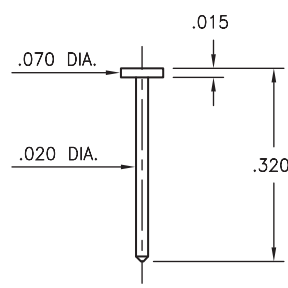
6170

6170-0-00-XX-00-00-03-0
Solder mount in .029 mounting hole



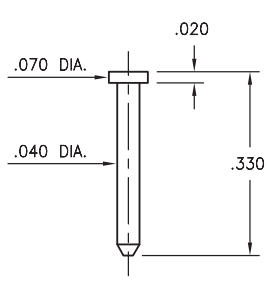
8808

8808-0-00-XX-00-00-33-0
Solder mount in .024 mounting hole



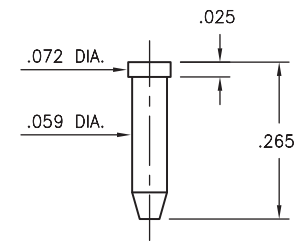
8330

8330-0-00-XX-00-00-38-0
Solder mount in .044 mounting hole



9265

9265-0-00-XX-00-00-38-0
Solder mount in .063 mounting hole
Also available on 16mm wide carrier tape:
1,170 parts per 13" reel.
See page 224.2 for Tape & Reel details



SPECIFICATIONS:

Pin Material: Brass Alloy 360, 1/2 Hard
(Except where noted)

Dimensions: Inches

Tolerances On: Lengths: $\pm .005$
Diameters: $\pm .002$
Angles: $\pm 2^\circ$



ORDER CODE: XXXX - X - 00 - XX - 00 - 00 - XX - 0

BASIC PART # →

SPECIFY PIN FINISH:

- 01 200 μ " TIN/LEAD OVER NICKEL
- ◆ 80 200 μ " TIN OVER NICKEL (RoHS)
- ◆ 15 10 μ " GOLD OVER NICKEL (RoHS)
- ◆ 21 20 μ " GOLD OVER NICKEL (RoHS)
- ◆ 34 50 μ " GOLD OVER NICKEL (RoHS)

