

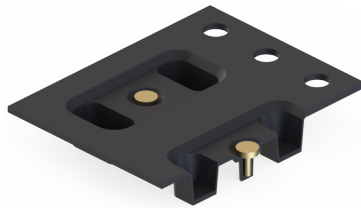
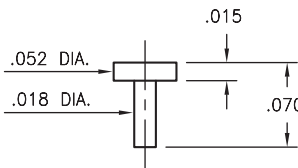
# MALE PCB PINS

## PINS ON TAPE & REEL PACKAGING

### 4361

4361-0-57-XX-00-00-33-0

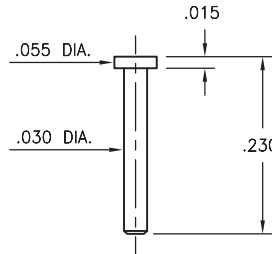
Solder mount in .022 mounting hole  
16mm wide X 8mm pitch carrier tape:  
3,600 parts per 13" reel.



### 4477

4477-0-57-XX-00-00-33-0

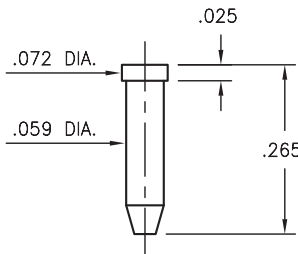
Solder mount in .034 mounting hole  
24mm wide X 8mm pitch carrier tape:  
1,300 parts per 13" reel.



### 9265

9265-0-57-XX-00-00-38-0

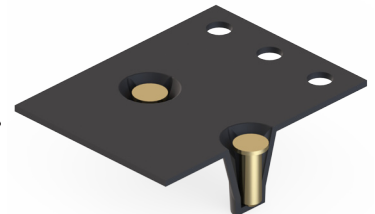
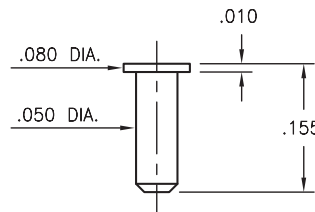
Solder mount in .063 mounting hole  
16mm wide X 8mm pitch carrier tape:  
1,170 parts per 13" reel.



### 2381

2381-0-57-XX-00-00-33-0

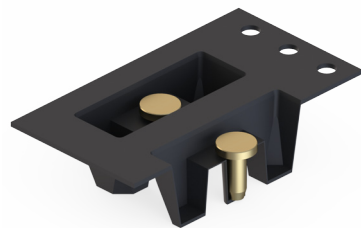
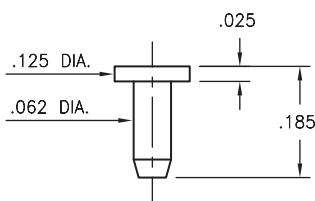
Solder mount in .054 mounting hole  
16mm wide X 8mm pitch carrier tape:  
1,800 parts per 13" reel.



### 9022

9022-0-57-XX-00-00-33-0

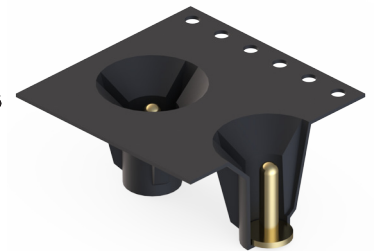
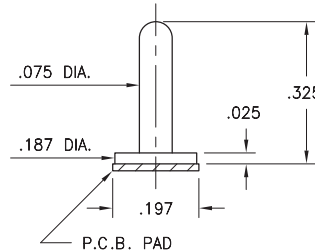
Solder mount in .066 mounting hole  
24mm wide X 8mm pitch carrier tape:  
1,500 parts per 13" reel.



### 8086

8086-0-59-XX-00-00-33-0

Surface mount  
16mm wide X 8mm pitch carrier tape:  
330 parts per 13" reel.



#### SPECIFICATIONS:

**Pin Material:** Brass Alloy 360, 1/2 Hard  
(Except where noted)

**Dimensions:** Inches

**Tolerances On:** Lengths:  $\pm .005$   
Diameters:  $\pm .002$   
Angles:  $\pm 2^\circ$



ORDER CODE: XXXX - X - 00 - XX - 00 - 00 - XX - 0

BASIC PART #

SPECIFY PIN FINISH:

◆ 15  $\mu$ m GOLD OVER NICKEL (RoHS)

