

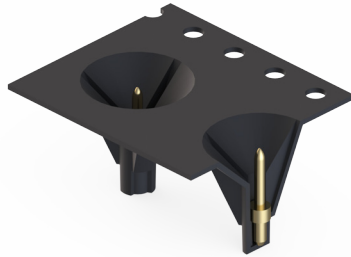
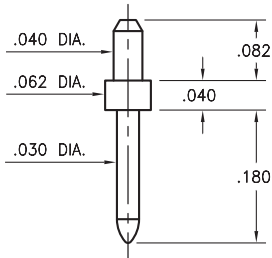
MALE PCB PINS

PINS ON TAPE & REEL PACKAGING

3137

3137-1-57-XX-00-00-08-0

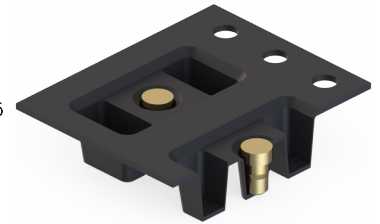
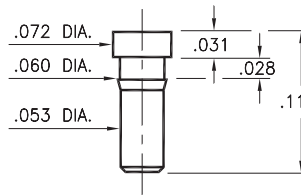
Solder mount in .043 mounting hole
16mm wide X 12mm pitch carrier tape:
580 parts per 13" reel.



0286

0286-0-57-XX-00-00-03-0

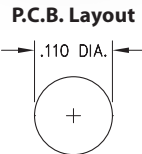
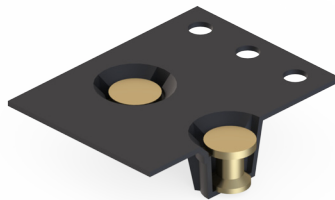
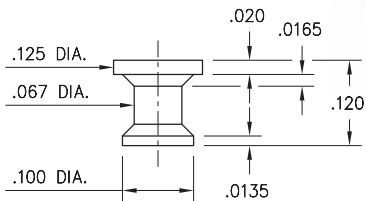
Press-fit in .057 mounting hole
16mm wide X 8mm pitch carrier tape:
2,500 parts per 13" reel.



1944

1944-0-57-15-00-00-03-0

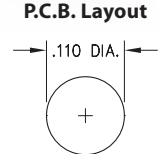
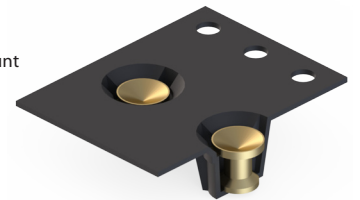
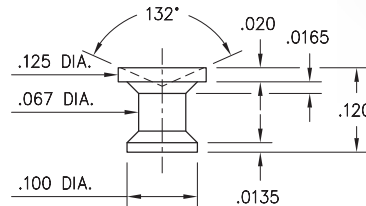
Flat face Target contact, surface mount
16mm wide X 8mm pitch carrier tape:
2,200 parts per 13" reel.



1943

1943-0-57-15-00-00-03-0

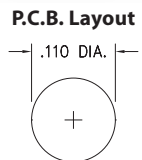
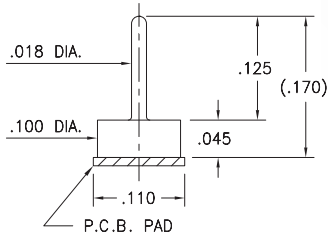
Concave face Target contact, surface mount
16mm wide X 8mm pitch carrier tape:
2,200 parts per 13" reel.



1508

1508-0-57-15-00-00-03-0

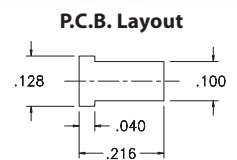
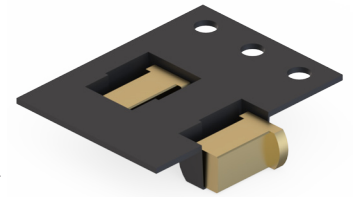
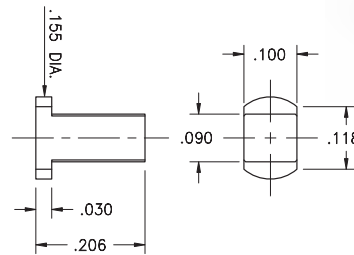
Test point, surface mount
16mm wide X 8mm pitch carrier tape:
1,600 parts per 13" reel.



7937

7937-0-58-15-00-00-03-0

Target contact, horizontal surface mount
16mm wide X 8mm pitch carrier tape:
2,400 parts per 13" reel.



SPECIFICATIONS:

Pin Material: Brass Alloy 360, 1/2 Hard
(Except where noted)

Dimensions: Inches

Tolerances On: Lengths: ±.005
Diameters: ±.002
Angles: ±2°



ORDER CODE: **XXXX - X - 00 - XX - 00 - 00 - XX - 0**

BASIC PART #

SPECIFY PIN FINISH:

- 01 200 μ" TIN/LEAD OVER NICKEL
- ◆ 80 200 μ" TIN OVER NICKEL (RoHS)
- ◆ 15 10 μ" GOLD OVER NICKEL (RoHS)
- ◆ 21 20 μ" GOLD OVER NICKEL (RoHS)
- ◆ 34 50 μ" GOLD OVER NICKEL (RoHS)

