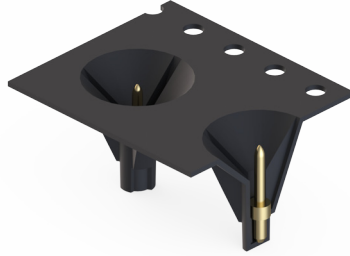
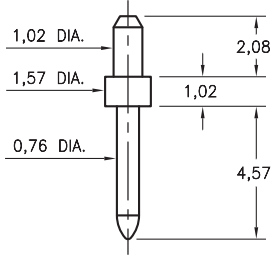


# MALE PCB PINS

## 3137

3137-1-57-XX-00-00-08-0

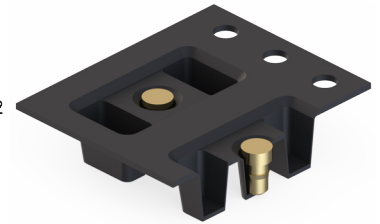
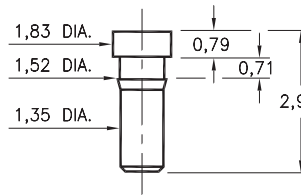
Solder mount in 1,09 mounting hole  
16mm wide X 12mm pitch carrier tape:  
580 parts per 330mm reel.



## 0286

0286-0-57-XX-00-00-03-0

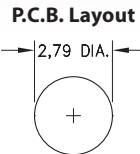
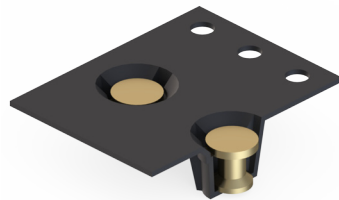
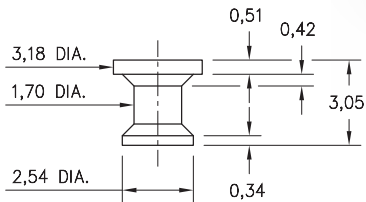
Press-fit in 1,45 mounting hole  
16mm wide X 8mm pitch carrier tape:  
2,500 parts per 330mm reel.



## 1944

1944-0-57-15-00-00-03-0

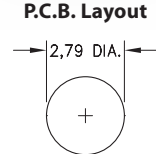
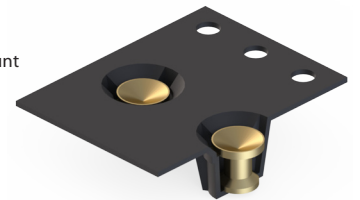
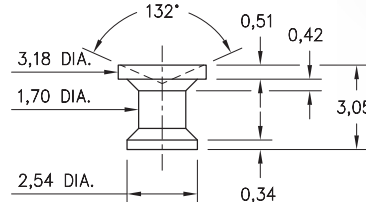
Flat face Target contact, surface mount  
16mm wide X 8mm pitch carrier tape:  
2,200 parts per 330mm reel.



## 1943

1943-0-57-15-00-00-03-0

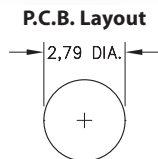
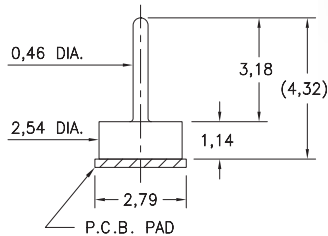
Concave face Target contact, surface mount  
16mm wide X 8mm pitch carrier tape:  
2,200 parts per 330mm reel.



## 1508

1508-0-57-15-00-00-03-0

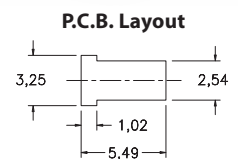
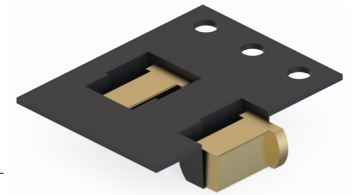
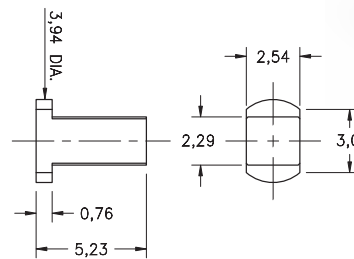
Test point, surface mount  
16mm wide X 8mm pitch carrier tape:  
1,600 parts per 330mm reel.



## 7937

7937-0-58-15-00-00-03-0

Target contact, horizontal surface mount  
16mm wide X 8mm pitch carrier tape:  
2,400 parts per 330mm reel.



### SPECIFICATIONS:

**Pin Material:** Brass Alloy 360, 1/2 Hard  
(Except where noted)

**Dimensions:** Millimeters

**Tolerances On:** Lengths: ±.005  
Diameters: ±.002  
Angles: ±2°



**ORDER CODE:** XXXX - X - 00 - XX - 00 - 00 - XX - 0

**BASIC PART #**

**SPECIFY PIN FINISH:**

- 01 200 μ" TIN/LEAD OVER NICKEL
- ◆ 80 200 μ" TIN OVER NICKEL (RoHS)
- ◆ 15 10 μ" GOLD OVER NICKEL (RoHS)
- ◆ 21 20 μ" GOLD OVER NICKEL (RoHS)
- ◆ 34 50 μ" GOLD OVER NICKEL (RoHS)

