

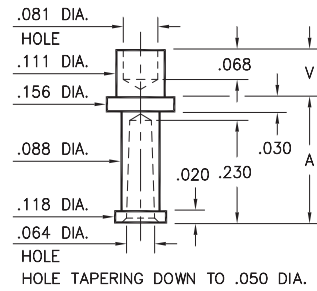
MALE PCB PINS

SOLDER TERMINALS VARIOUS TYPES

2709

2709-X-07-XX-00-00-07-0

Swage mount in .116 hole

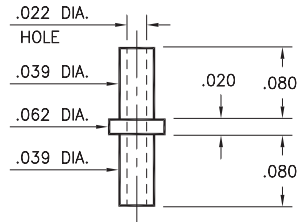


Basic Part Number	Board Thickness	Length V	Length A
2709-2	.062	.109	.281
2709-3	.094	.141	.250

2115

2115-2-00-XX-00-00-07-0

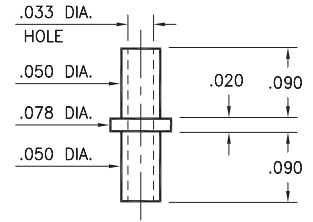
Swage mount in .043 hole
For a .062 thick board



2326

2326-2-00-XX-00-00-07-0

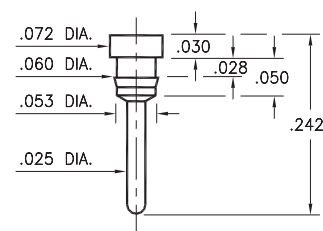
Swage mount in .055 hole
For a .062 thick board



8831

8831-0-00-XX-00-00-03-0

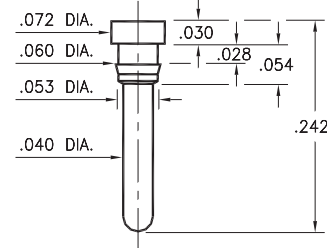
Press-fit in .057 mounting hole



8835

8835-0-00-XX-00-00-03-0

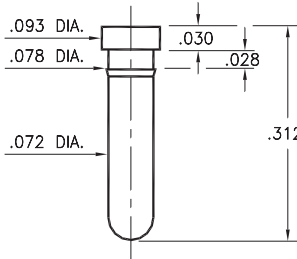
Press-fit in .057 mounting hole



8836

8836-0-00-XX-00-00-03-0

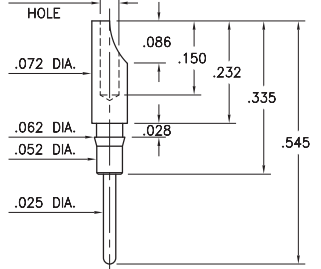
Press-fit in .075 mounting hole



0518

0518-0-01-XX-00-00-03-0

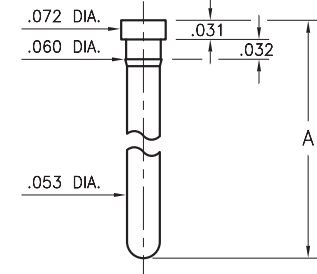
Press-fit in .059 mounting hole
For wire sizes up to 22 AWG



0912/7912

0912-0-00-XX-00-00-03-0

Press-fit in .057 mounting hole

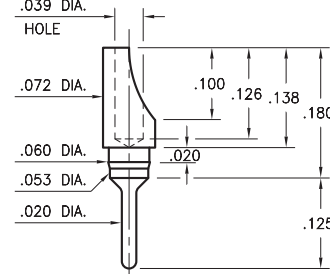


Basic Part Number	Pin Length A
0912-0	.313
7912-0	.510

3080

3080-0-01-XX-00-00-03-0

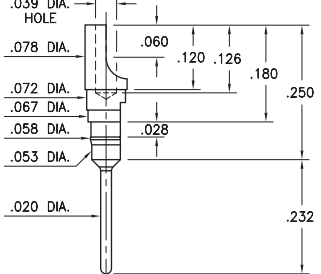
Press-fit in .057 mounting hole
For wire sizes up to 22 AWG



3180

3180-2-01-XX-00-00-03-0

Press-fit in .055 mounting hole
For wire sizes up to 22 AWG



SPECIFICATIONS:

Pin Material: Brass Alloy 360, 1/2 Hard
(Swage pins are annealed)

Dimensions: Inches

Tolerances On: Lengths: ±.005
Diameters: ±.002
Angles: ± 2°



ORDER CODE: XXXX - X - XX - XX - 00 - 00 - XX - 0

BASIC PART #

SPECIFY PIN FINISH:

- 01 200 μ" TIN/LEAD OVER NICKEL
- ◆ 80 200 μ" TIN OVER NICKEL (RoHS)
- ◆ 44 300 μ" SILVER OVER COPPER (RoHS)
- 50 300 μ" ELECTRO-SOLDER (60/40 SnPb)

