

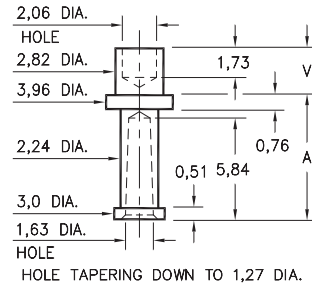
MALE PCB PINS

SOLDER TERMINALS VARIOUS TYPES

2709

2709-X-07-XX-00-00-07-0

Swage mount in 2,95 hole

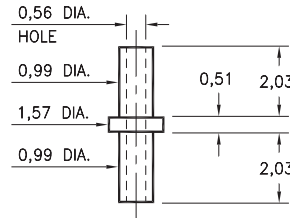


Basic Part Number	Board Thickness	Length V	Length A
2709-2	1,57	2,77	7,14
2709-3	2,39	3,58	6,35

2115

2115-2-00-XX-00-00-07-0

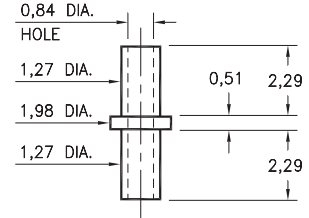
Swage mount in 1,09 hole
For a 1,57 thick board



2326

2326-2-00-XX-00-00-07-0

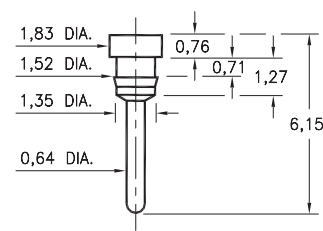
Swage mount in 1,40 hole
For a 1,57 thick board



8831

8831-0-00-XX-00-00-03-0

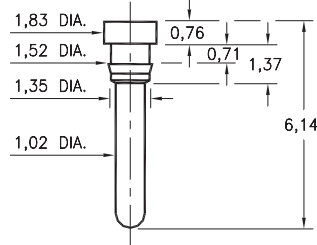
Press-fit in 1,45 mounting hole



8835

8835-0-00-XX-00-00-03-0

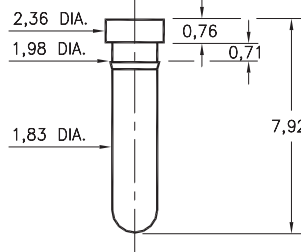
Press-fit in 1,45 mounting hole



8836

8836-0-00-XX-00-00-03-0

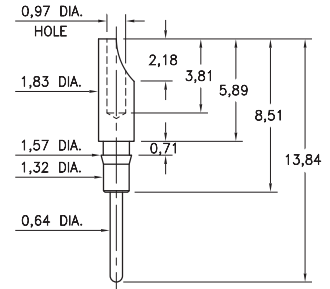
Press-fit in 1,91 mounting hole



0518

0518-0-01-XX-00-00-03-0

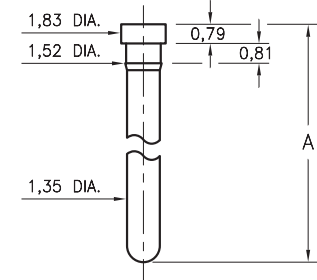
Press-fit in 1,5 mounting hole
For wire sizes up to 22 AWG



0912/7912

X912-0-00-XX-00-00-03-0

Press-fit in 1,45 mounting hole

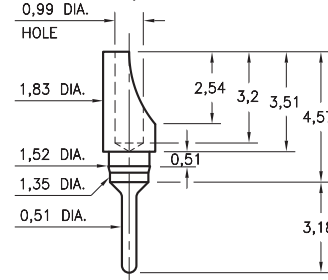


Basic Part Number	Pin Length A
0912-0	7,95
7912-0	12,95

3080

3080-0-01-XX-00-00-03-0

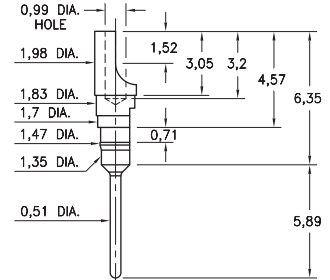
Press-fit in 1,45 mounting hole
For wire sizes up to 22 AWG



3180

3180-2-01-XX-00-00-03-0

Press-fit in 1,4 mounting hole
For wire sizes up to 22 AWG



SPECIFICATIONS:

Pin Material: Brass Alloy 360, 1/2 Hard
(Swage pins are annealed)

Dimensions: Millimeters

Tolerances On: Lengths: $\pm 0,13$
Diameters: $\pm 0,051$
Angles: $\pm 2^\circ$



ORDER CODE: XXXX - X - XX - XX - 00 - 00 - XX - 0

BASIC PART #

SPECIFY PIN FINISH:

- 01 5,08 μ m TIN/LEAD OVER NICKEL
- ◆ 80 5,08 μ m TIN OVER NICKEL (RoHS)
- ◆ 44 7,62 μ m SILVER OVER COPPER (RoHS)
- 50 7,62 μ m ELECTRO-SOLDER (60/40 SnPb)

