

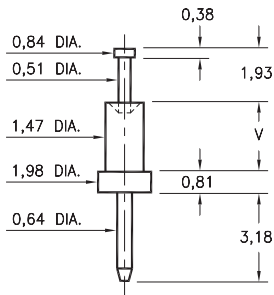
# MALE PCB PINS

## SOLDER TERMINALS PIN TYPE

### 2318

2318-X-00-XX-00-00-07-0

Swage mount in 1,57 hole

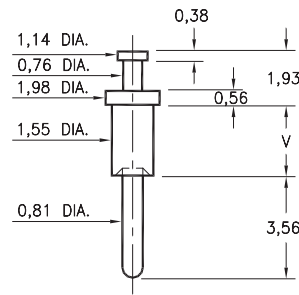


Basic Part Number	Board Thickness	Length V
2318-1	0,79	1,30
2318-2	1,57	2,08
2318-3	2,39	2,87

### 2309

2309-X-00-XX-00-00-07-0

Swage mount in 1,63 hole

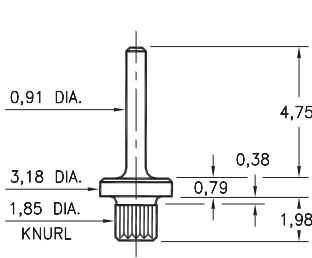


Basic Part Number	Board Thickness	Length V
2309-1	0,79	1,37
2309-2	1,57	2,13
2309-3	2,39	2,92
2309-4	3,18	3,73

### 2514

2514-2-00-XX-00-00-07-0

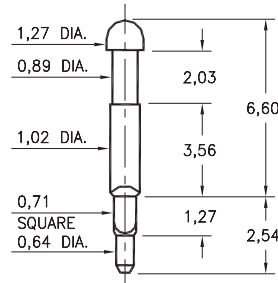
Press-fit in 1,78 mounting hole



### 8602

8602-1-00-XX-00-00-07-0

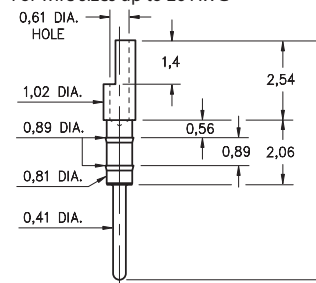
Square press-fit in 0,81 plated through-hole



### 3050

3050-X-01-XX-00-00-03-0

Press-fit in 0,81 mounting hole  
For wire sizes up to 26 AWG

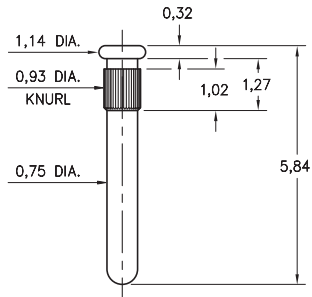


Basic Part Number	Pin Length A
3050-0	7,7
3050-3	9,55

### 8250

8250-0-00-XX-00-00-03-0

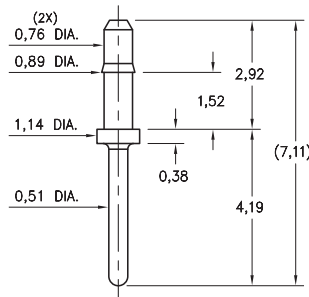
Press-fit in 0,86 mounting hole



### 9994

9994-0-00-XX-00-00-03-0

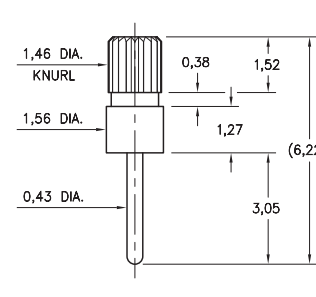
Press-fit in 0,84 mounting hole



### 9067

9067-0-00-XX-00-00-03-0

Press-fit in 1,4 mounting hole



#### SPECIFICATIONS:

**Pin Material:** Brass Alloy 360, 1/2 Hard  
(Swage pins are annealed)

**Dimensions:** Millimeters

**Tolerances On:** Lengths:  $\pm 0,13$   
Diameters:  $\pm 0,051$   
Angles:  $\pm 2^\circ$



ORDER CODE: **XXXX - X - 00 - XX - 00 - 00 - 07 - 0**

BASIC PART #

SPECIFY PIN FINISH:

- 01 5,08 $\mu$ m TIN/LEAD OVER NICKEL
- ◆ 80 5,08 $\mu$ m TIN OVER NICKEL (RoHS)
- ◆ 44 7,62 $\mu$ m SILVER OVER COPPER (RoHS)
- 50 7,62 $\mu$ m ELECTRO-SOLDER  
(60/40 SnPb)

