

SPRING-LOADED PINS

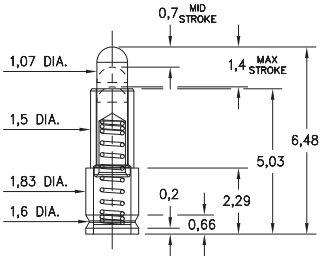
SPRING-LOADED PINS ON TAPE & REEL PACKAGING

0977

72 or 75

0977-0-57-20-7X-14-11-0

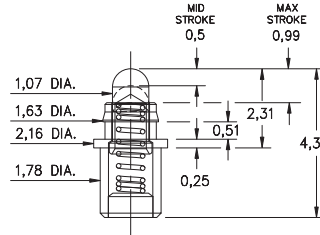
Standard stroke, Surface mount
24mm wide carrier tape: 1,100 parts per 330mm reel.



0926-0

0926-0-57-20-76-14-11-0

Low Profile, Short Stroke. Solder mount in 1,88 min. mounting hole:
16mm wide carrier tape: 1,700 parts per 330mm reel.

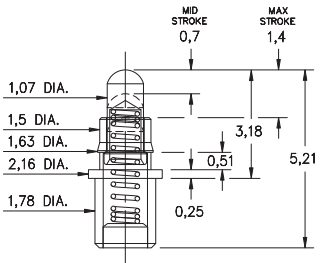


0926-1

72 or 75

0926-1-57-20-7X-14-11-0

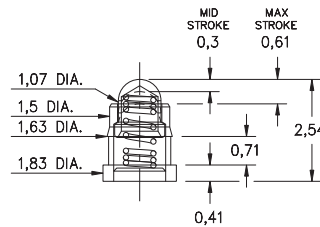
Low profile, Standard stroke. Solder mount in 1,88 min. mounting hole
24mm wide carrier tape: 1,450 parts per 330mm reel.



0965

0965-0-57-20-80-14-11-0

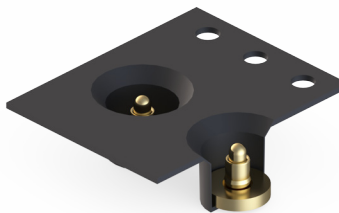
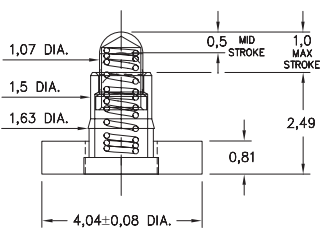
Ultra low profile, Surface mount, *Stainless steel spring
16mm wide carrier tape: 3,000 parts per 330mm reel.



0990-0

0990-0-57-20-76-14-11-0

Short stroke, Surface mount, Large base
16mm wide carrier tape: 2,150 parts per 330mm reel.

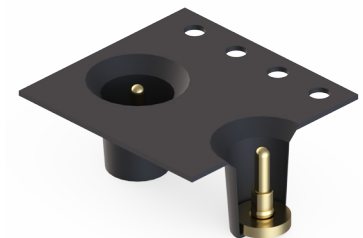
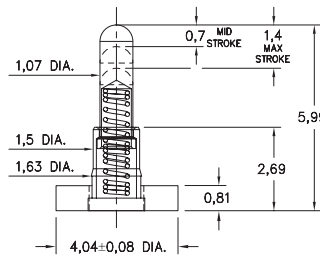


0990-4

72 or 75

0990-4-57-20-7X-14-11-0

Standard stroke, Surface mount, Large base
16mm wide carrier tape: 850 parts per 330mm reel.



Material Specifications:

Sleeve & Plunger Material: Copper Alloy
Spring Material: BeCu or Stainless Steel 302 *
Sleeve & Plunger Finish: 0,5µm Gold over Nickel
Spring Finish: 0,25µm Gold over Nickel
Dimensions: Millimeters
Tolerances On: Lengths: ± 0,15
Diameters: ± 0,051
Angles: ± 2°



Mechanical & Electrical Specifications:

Durability: Up to 1,000,000 cycles
Current Rating: 2A continuous, 3A peak
Contact Resistance: 20 mΩ max.

Environmental Specifications:

Operating temperature range:
-55/+125° C (discontinuous)

75, 76, 80 Springs are NOT interchangeable
72, 75 Springs are interchangeable

Order Code: 09XX - X - 57 - 20 - XX - 14 - 11 - 0

Spring Number

Spring Number	Mid. Stroke	Max. Stroke	Force @ Mid. Stroke	Initial Force (Pre-Load)
72	0,7	1,4	35 g	15 g
75	0,7	1,4	60 g	25 g
76	0,5	0,99	60 g	25 g
*80	0,3	0,61	115 g	25 g

