

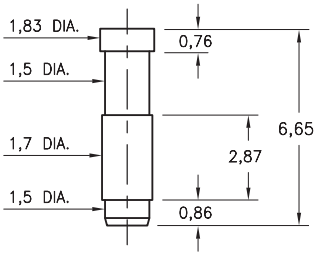
# MALE PCB PINS

## PRINTED CIRCUIT PINS

### 1980

**1980-0-00-00-XX-00-03-0**

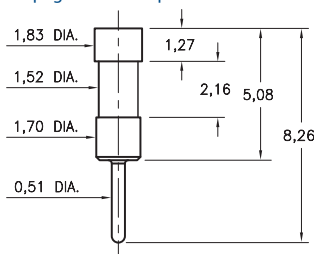
Surface mount, Target Connector  
Also available on carrier tape: 1,450 parts per 330mm reel. Order as: 319-10-1XX-40-080001



### 2820

**2820-0-00-XX-00-00-03-0**

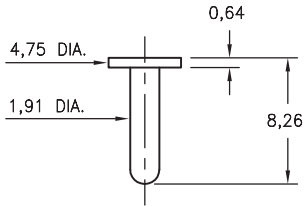
Also available in HSMT connector series: 328-XX-1XX-40-020001  
1,450 parts per 330mm reel  
See page 87.4 for Tape & Reel details



### 8086

**8086-0-00-XX-00-00-33-0**

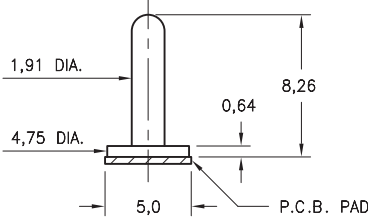
Solder mount in 2,01 mounting hole  
Also available on 12mm wide carrier tape: 550 parts per 330mm reel.  
See page 224.3 for Tape & Reel details



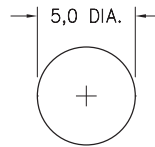
### 8086

**8086-0-00-XX-00-00-33-0**

Surface mount  
Also available on 16mm wide carrier tape: 330 parts per 330mm reel.  
See page 224.3 for Tape & Reel details



#### P.C.B. Layout



#### SPECIFICATIONS:

**Pin Material:** Brass Alloy 360, 1/2 Hard  
(Except where noted)

**Dimensions:** Millimeters

**Tolerances On:** Lengths:  $\pm .005$   
Diameters:  $\pm .002$   
Angles:  $\pm 2^\circ$



**ORDER CODE:** XXXX - X - 00 - XX - 00 - 00 - XX - 0

**BASIC PART #**

**SPECIFY PIN FINISH:**

- 01 200  $\mu$ m TIN/LEAD OVER NICKEL
- ◆ 80 200  $\mu$ m TIN OVER NICKEL (RoHS)
- ◆ 15 10  $\mu$ m GOLD OVER NICKEL (RoHS)
- ◆ 21 20  $\mu$ m GOLD OVER NICKEL (RoHS)
- ◆ 34 50  $\mu$ m GOLD OVER NICKEL (RoHS)