

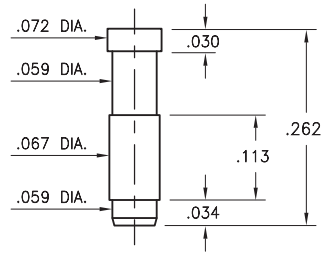
MALE PCB PINS

PRINTED CIRCUIT PINS

1980

1980-0-00-00-XX-00-03-0

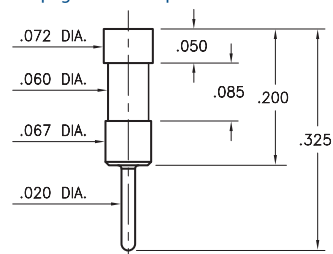
Surface mount, Target Connector
Also available on carrier tape: 1,450 parts per 13" reel. Order as: 319-10-1XX-40-080001



2820

2820-0-00-XX-00-00-03-0

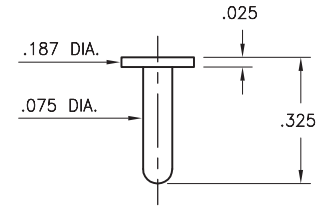
Also available in HSMT connector series: 328-XX-1XX-40-020001
1,450 parts per 13" reel
See page 87.4 for Tape & Reel details



8086

8086-0-00-XX-00-00-33-0

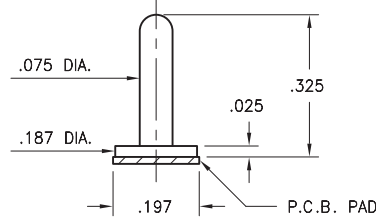
Solder mount in .079 mounting hole
Also available on 12mm wide carrier tape: 550 parts per 13" reel.
See page 224.3 for Tape & Reel details



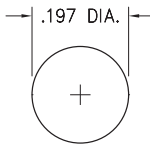
8086

8086-0-00-XX-00-00-33-0

Surface mount
Also available on 16mm wide carrier tape: 330 parts per 13" reel.
See page 224.3 for Tape & Reel details



P.C.B. Layout



SPECIFICATIONS:

Pin Material: Brass Alloy 360, 1/2 Hard
(Except where noted)

Dimensions: Inches

Tolerances On: Lengths: $\pm .005$
Diameters: $\pm .002$
Angles: $\pm 2^\circ$



ORDER CODE: XXXX - X - 00 - XX - 00 - 00 - XX - 0

BASIC PART #

SPECIFY PIN FINISH:

- 01 200 μ m TIN/LEAD OVER NICKEL
- ◆ 80 200 μ m TIN OVER NICKEL (RoHS)
- ◆ 15 10 μ m GOLD OVER NICKEL (RoHS)
- ◆ 21 20 μ m GOLD OVER NICKEL (RoHS)
- ◆ 34 50 μ m GOLD OVER NICKEL (RoHS)