

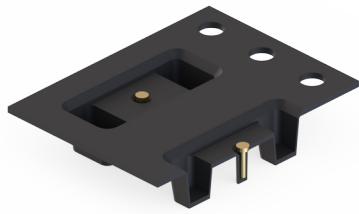
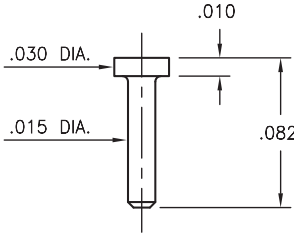
# MALE PCB PINS

## PINS ON TAPE & REEL PACKAGING

### 4825

4825-0-57-XX-00-00-33-0

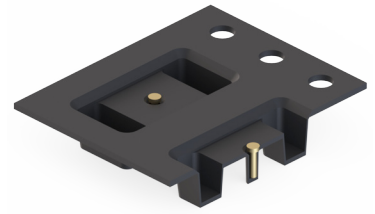
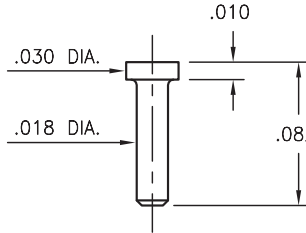
Solder mount in .019 mounting hole  
16mm wide X 8mm pitch carrier tape:  
3,250 parts per 13" reel.



### 4288

4288-0-57-XX-00-00-33-0

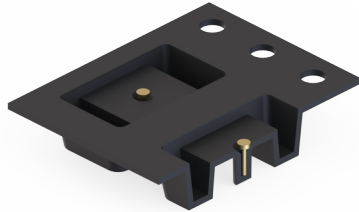
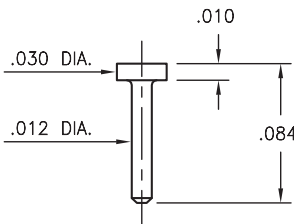
Solder mount in .022 mounting hole  
16mm wide X 8mm pitch carrier tape:  
3,250 parts per 13" reel.



### 4353

4353-0-57-XX-00-00-33-0

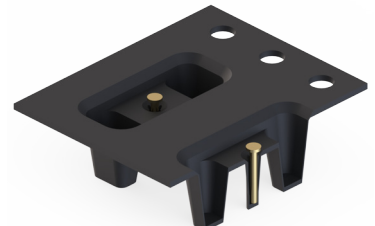
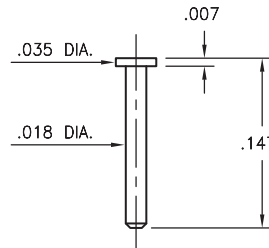
Solder mount in .016 mounting hole  
16mm wide X 8mm pitch carrier tape:  
3,040 parts per 13" reel.



### 4068

4068-0-57-XX-00-00-33-0

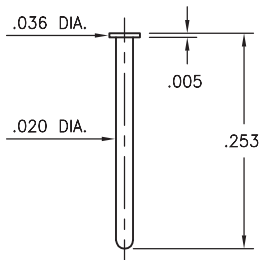
Solder mount in .022 mounting hole  
16mm wide X 8mm pitch carrier tape:  
2,000 parts per 13" reel.



### 6547

6547-0-57-XX-00-00-33-0

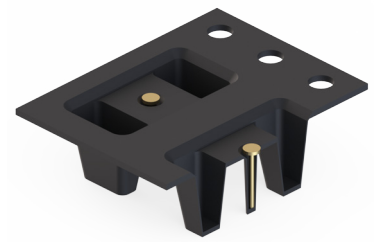
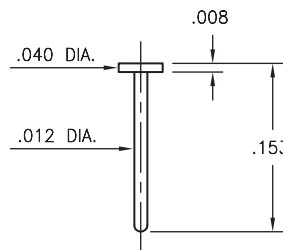
Solder mount in .024 mounting hole  
24mm wide X 8mm pitch carrier tape:  
1,080 parts per 13" reel.



### 9083

9083-0-57-XX-00-00-38-0

Solder mount in .016 mounting hole  
16mm wide X 8mm pitch carrier tape:  
1,950 parts per 13" reel.



#### SPECIFICATIONS:

**Pin Material:** Brass Alloy 360, 1/2 Hard  
(Except where noted)

**Dimensions:** Inches

**Tolerances On:** Lengths:  $\pm .005$   
Diameters:  $\pm .002$   
Angles:  $\pm 2^\circ$



**ORDER CODE:** XXXX - X - 00 - XX - 00 - 00 - XX - 0

**BASIC PART #** →

← **SPECIFY PIN FINISH:**

- 01 200  $\mu$ " TIN/LEAD OVER NICKEL
- ◆ 80 200  $\mu$ " TIN OVER NICKEL (RoHS)
- ◆ 15 10  $\mu$ " GOLD OVER NICKEL (RoHS)
- ◆ 21 20  $\mu$ " GOLD OVER NICKEL (RoHS)
- ◆ 34 50  $\mu$ " GOLD OVER NICKEL (RoHS)

