

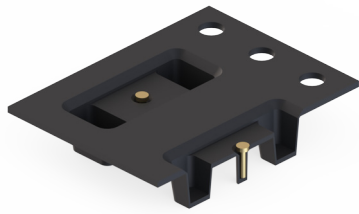
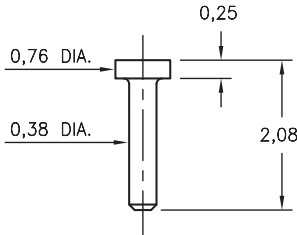
MALE PCB PINS

PINS ON TAPE & REEL PACKAGING

4825

4825-0-57-XX-00-00-33-0

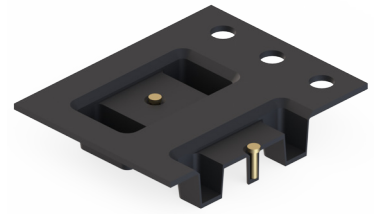
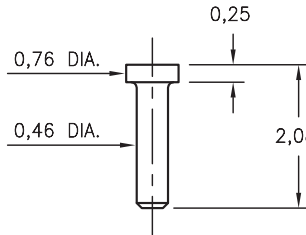
Solder mount in 0,48 mounting hole
16mm wide X 8mm pitch carrier tape:
3,250 parts per 330mm reel.



4288

4288-0-57-XX-00-00-33-0

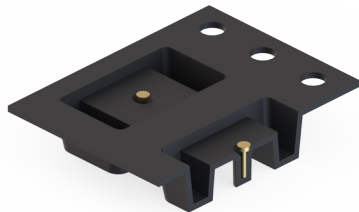
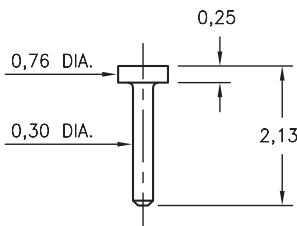
Solder mount in 0,48 mounting hole
16mm wide X 8mm pitch carrier tape:
3,250 parts per 13" reel.



4353

4353-0-57-XX-00-00-33-0

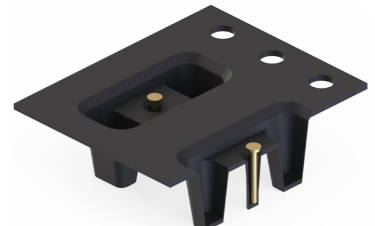
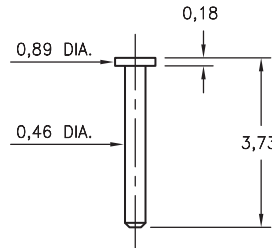
Solder mount in 0,41 mounting hole
16mm wide X 8mm pitch carrier tape:
3,040 parts per 330mm reel.



4068

4068-0-57-XX-00-00-33-0

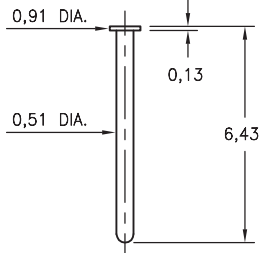
Solder mount in 0,56 mounting hole
16mm wide X 8mm pitch carrier tape:
2,000 parts per 330mm reel.



6547

6547-0-57-XX-00-00-33-0

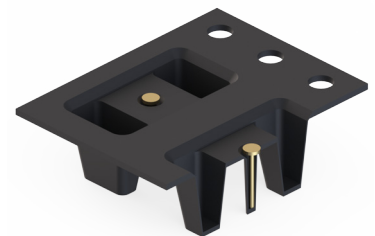
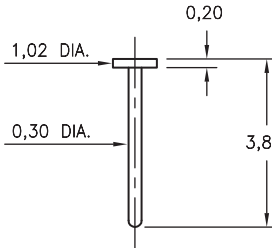
Solder mount in 0,61 mounting hole
24mm wide X 8mm pitch carrier tape:
1,080 parts per 330mm reel.



9083

9083-0-57-XX-00-00-38-0

Solder mount in 0,41 mounting hole
16mm wide X 8mm pitch carrier tape:
1,950 parts per 330mm reel.



SPECIFICATIONS:

Pin Material: Brass Alloy 360, 1/2 Hard
(Except where noted)

Dimensions: Millimeters

Tolerances On: Lengths: $\pm 0,13$
Diameters: $\pm 0,051$
Angles: $\pm 2^\circ$



ORDER CODE: XXXX - X - 00 - XX - 00 - 00 - XX - 0

BASIC PART # →

→ **SPECIFY PIN FINISH:**

- 01 5,08 μ m TIN/LEAD OVER NICKEL
- ◆ 80 5,08 μ m TIN OVER NICKEL (RoHS)
- ◆ 15 0,25 μ m GOLD OVER NICKEL (RoHS)
- ◆ 21 0,51 μ m GOLD OVER NICKEL (RoHS)
- ◆ 34 1,27 μ m GOLD OVER NICKEL (RoHS)

