

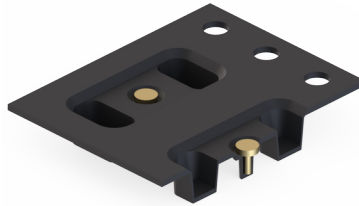
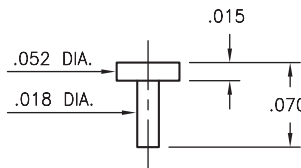
MALE PCB PINS

PINS ON TAPE & REEL PACKAGING

4361

4361-0-57-XX-00-00-33-0

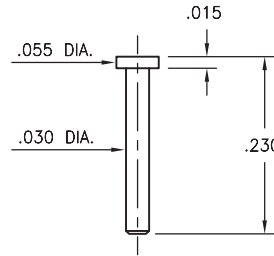
Solder mount in .022 mounting hole
16mm wide X 8mm pitch carrier tape:
3,600 parts per 13" reel.



4477

4477-0-57-XX-00-00-33-0

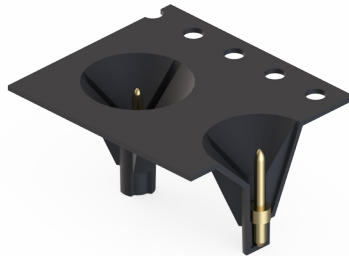
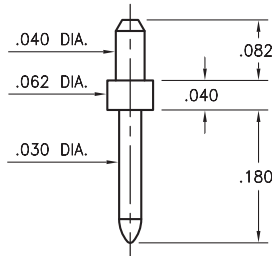
Solder mount in .034 mounting hole
24mm wide X 8mm pitch carrier tape:
1,300 parts per 13" reel.



3137

3137-1-57-XX-00-00-08-0

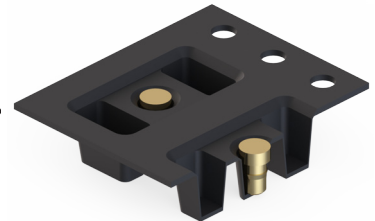
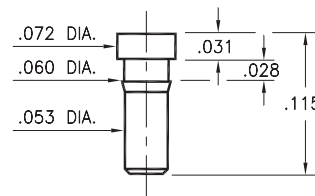
Solder mount in .043 mounting hole
16mm wide X 12mm pitch carrier tape:
580 parts per 13" reel.



0286

0286-0-57-XX-00-00-03-0

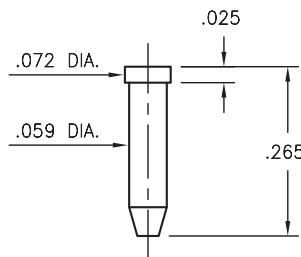
Press-fit in .057 mounting hole
16mm wide X 8mm pitch carrier tape:
2,500 parts per 13" reel.



9265

9265-0-57-XX-00-00-38-0

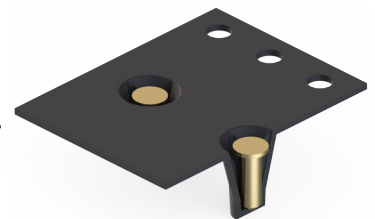
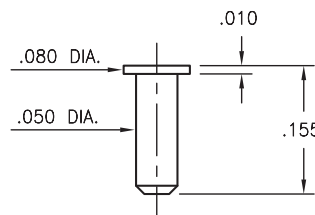
Solder mount in .063 mounting hole
16mm wide X 8mm pitch carrier tape:
1,170 parts per 13" reel.



2381

2381-0-57-XX-00-00-33-0

Solder mount in .054 mounting hole
16mm wide X 8mm pitch carrier tape:
1,800 parts per 13" reel.



SPECIFICATIONS:

Pin Material: Brass Alloy 360, 1/2 Hard
(Except where noted)

Dimensions: Inches

Tolerances On: Lengths: $\pm .005$
Diameters: $\pm .002$
Angles: $\pm 2^\circ$



ORDER CODE: XXXX - X - 00 - XX - 00 - 00 - XX - 0

BASIC PART #

SPECIFY PIN FINISH:

◆ 15 μ m GOLD OVER NICKEL (RoHS)

