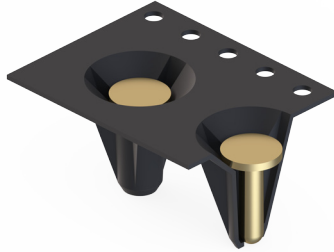
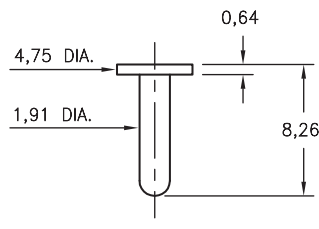


# MALE PCB PINS

## 8086

8086-0-57-XX-00-00-33-0

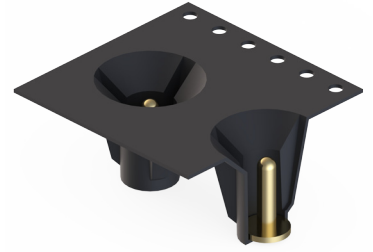
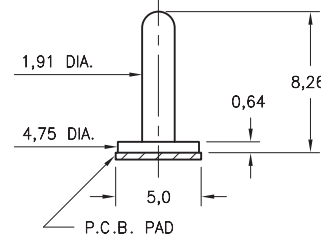
Solder mount in 2,01 mounting hole  
12mm wide X 8mm pitch carrier tape:  
550 parts per 330mm reel.



## 8086

8086-0-59-XX-00-00-33-0

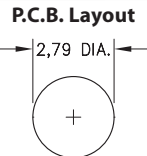
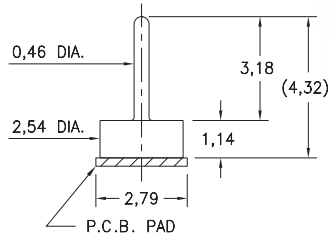
Surface mount  
16mm wide X 8mm pitch carrier tape:  
330 parts per 330mm reel.



## 1508

1508-0-57-15-00-00-03-0

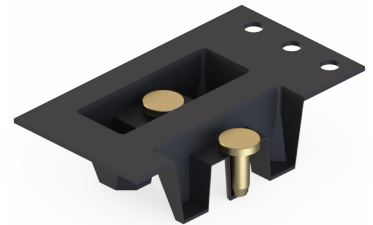
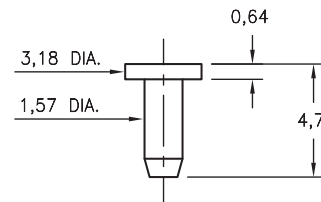
Test point, surface mount  
16mm wide X 8mm pitch carrier tape:  
1,600 parts per 330mm reel.



## 9022

9022-0-57-XX-00-00-33-0

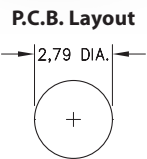
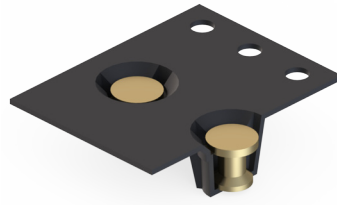
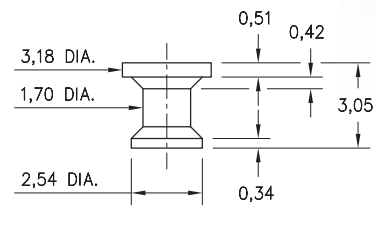
Solder mount in 1,68 mounting hole  
24mm wide X 8mm pitch carrier tape:  
1,500 parts per 330mm reel.



## 1944

1944-0-57-15-00-00-03-0

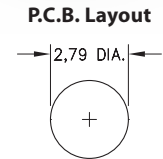
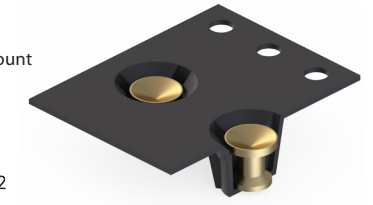
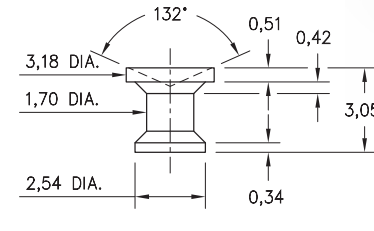
Flat face Target contact, surface mount  
16mm wide X 8mm pitch carrier tape:  
2,200 parts per 330mm reel.



## 1943

1943-0-57-15-00-00-03-0

Concave face Target contact, surface mount  
16mm wide X 8mm pitch carrier tape:  
2,200 parts per 330mm reel.



### SPECIFICATIONS:

**Pin Material:** Brass Alloy 360, 1/2 Hard  
(Except where noted)

**Dimensions:** Millimeters

**Tolerances On:** Lengths: ±.005  
Diameters: ±.002  
Angles: ±2°



**ORDER CODE:** XXXX - X - 00 - XX - 00 - 00 - XX - 0

**BASIC PART #** →

← **SPECIFY PIN FINISH:**

- 01 200 μ" TIN/LEAD OVER NICKEL
- ◆ 80 200 μ" TIN OVER NICKEL (RoHS)
- ◆ 15 10 μ" GOLD OVER NICKEL (RoHS)
- ◆ 21 20 μ" GOLD OVER NICKEL (RoHS)
- ◆ 34 50 μ" GOLD OVER NICKEL (RoHS)

