

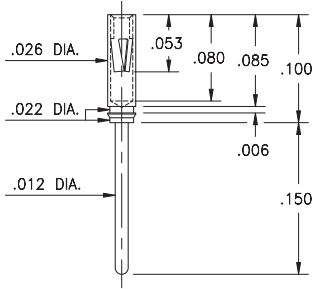
PIN RECEPTACLES

**FOR .008" - .013" DIAMETER PINS (#04 CONTACT)
AND .012" - .017" DIAMETER PINS (#10 CONTACT)
(SEE SPECIFIC CONTACT RANGE ON PAGE 250)**

8210

8210-0-15-15-04-27-04-0

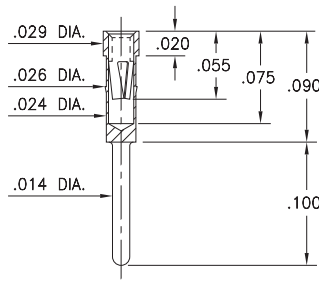
Press-fit in .024/.027 stepped hole



0439

0439-0-15-15-04-27-04-0

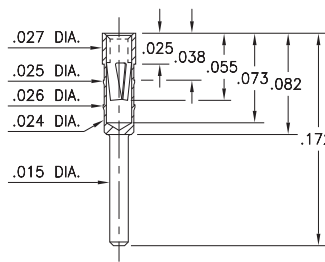
Press-fit in .025 mounting hole



4518

4518-0-15-15-04-27-04-0

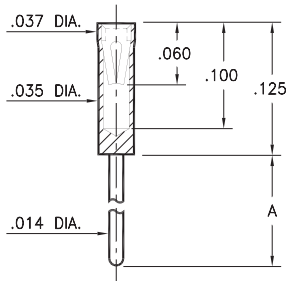
Press-fit in .025 mounting hole



X464

X464-X-15-XX-10-XX-04-0

Solder mount in .016 min. mounting hole

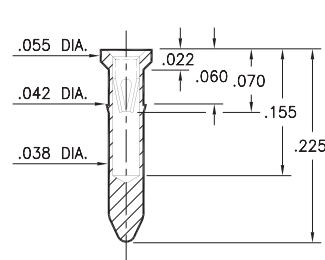


Basic Part Number	Length A
0464-0	.125
0464-1	.250
6464-0	.275

9225

9225-0-15-XX-10-XX-10-0

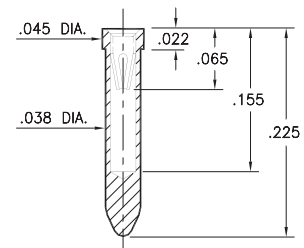
Press-fit in .039 mounting hole



8947

8947-0-15-XX-10-XX-10-0

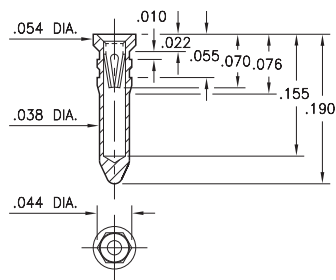
Solder mount in .040 min. mounting hole
Also available on 24mm wide carrier tape:
1,350 parts per 13" reel.
See page 194.1 for Tape & Reel details



8225

8225-0-15-XX-10-XX-10-0

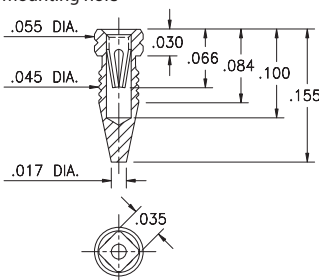
Hex press-fit in .042 plated through-hole



4993

4993-0-15-15-10-27-10-0

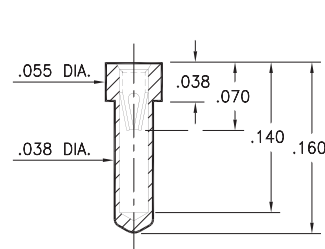
Compliant press-fit in .041 - .043 Dia. mounting hole



0529

0529-0-15-XX-10-XX-10-0

.040 min. mounting hole



SPECIFICATIONS:

Shell Material: Brass Alloy 360, 1/2 Hard

Contact Material: Beryllium Copper Alloy 172, HT

Dimensions: Inches

Tolerances On: Lengths: ±.005

Diameters: ±.002

Angles: ± 2°



ORDER CODE: XXXX - X - XX - XX - XX - XX - 0

BASIC PART #

SPECIFY SHELL FINISH:

- 01 200 μ" TIN/LEAD OVER NICKEL
- ◆ 80 200 μ" TIN OVER NICKEL (RoHS)
- ◆ 15 10 μ" GOLD OVER NICKEL (RoHS)

SPECIFY CONTACT FINISH:

- 02 100 μ" TIN/LEAD OVER NICKEL
- ◆ 84 100 μ" TIN OVER NICKEL (RoHS)
- ◆ 27 30 μ" GOLD OVER NICKEL (RoHS)

SELECT CONTACT:

#04 or #10 CONTACT (DATA ON PAGE 250)
(CONTACTS #04 & #10 NOT INTERCHANGEABLE)

