

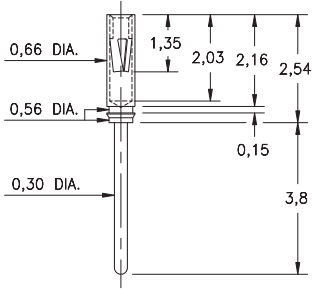
# PIN RECEPTACLES

**FOR 0,20 - 0,33 DIAMETER PINS (#04 CONTACT)  
AND 0,30 - 0,43 DIAMETER PINS (#10 CONTACT)  
(SEE SPECIFIC CONTACT RANGE ON PAGE 250)**

## 8210

**8210-0-15-15-04-27-04-0**

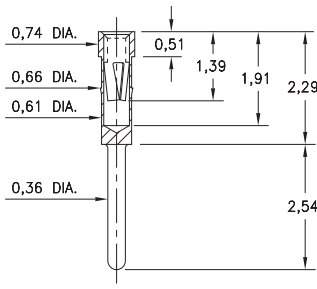
Press-fit in 0,61/0,68 stepped hole



## 0439

**0439-0-15-15-04-27-04-0**

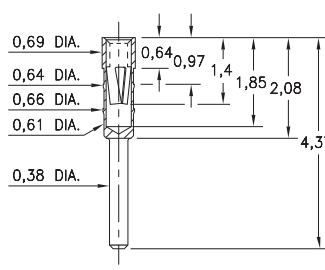
Press-fit in 0,64 mounting hole



## 4518

**4518-0-15-15-04-27-04-0**

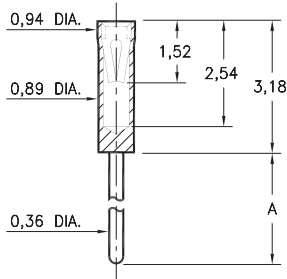
Press-fit in 0,64 mounting hole



## X464

**X464-X-15-XX-10-XX-04-0**

Solder mount in 0,41 min. mounting hole

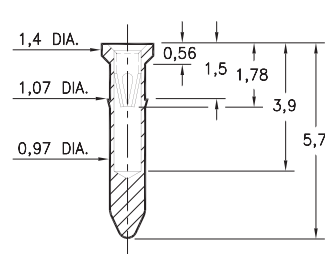


Basic Part Number	Length A
<b>0464-0</b>	3,18
<b>0464-1</b>	6,35
<b>6464-0</b>	6,99

## 9225

**9225-0-15-XX-10-XX-10-0**

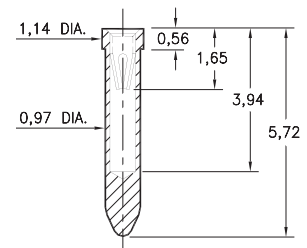
Press-fit in 1,0 mounting hole



## 8947

**8947-0-15-XX-10-XX-10-0**

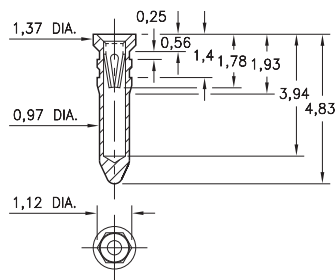
Solder mount in 1,02 min. mounting hole  
Also available on 24mm wide carrier tape:  
1,350 parts per 330mm reel  
See page 194.1 for Tape & Reel details



## 8225

**8225-0-15-XX-10-XX-10-0**

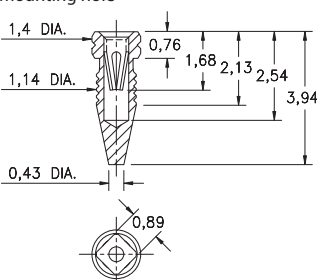
Hex press-fit in 1,07 plated through-hole



## 4993

**4993-0-15-15-10-27-10-0**

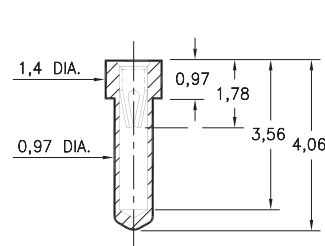
Compliant press-fit in 1,04 - 1,12 Dia. mounting hole



## 0529

**0529-0-15-XX-10-XX-10-0**

Solder mount in 1,02 min. mounting hole



### SPECIFICATIONS:

**Shell Material:** Brass Alloy 360, 1/2 Hard

**Contact Material:** Beryllium Copper Alloy 172, HT

**Dimensions:** Millimeters

**Tolerances On:** Lengths: ± 0,13  
Diameters: ± 0,051  
Angles: ± 2°



**ORDER CODE: XXXX - X - XX - XX - XX - XX - 0**

**BASIC PART #**

**SPECIFY SHELL FINISH:**

- 01 5,08µm TIN/LEAD OVER NICKEL
- ◆ 80 5,08µm TIN OVER NICKEL (RoHS)
- ◆ 15 0,25µm GOLD OVER NICKEL (RoHS)

**SPECIFY CONTACT FINISH:**

- 02 2,54µm TIN/LEAD OVER NICKEL
- ◆ 84 2,54µm TIN OVER NICKEL (RoHS)
- ◆ 27 0,76µm GOLD OVER NICKEL (RoHS)

**SELECT CONTACT:**

**#04 or #10 CONTACT (DATA ON PAGE 250)**  
(CONTACTS #04 & #10 NOT INTERCHANGEABLE)

